

# acsento

COLLECTION 2024

PASSIONATE  
ABOUT CLIENTS  
AND RUGS



# Content



**Ontdek onze Acsento collecties in meer detail via deze interactieve catalogus.** Door in de inhoudstafel te klikken op de naam van het gewenste tapijt, navigeer je automatisch naar de correcte pagina. Daar tonen we voor elk tapijt wat de mogelijke kleuren, maten en vormen zijn.



**Découvrez nos collections Acsento plus en détail grâce à ce catalogue interactif.** En cliquant sur le nom du tapis souhaité dans la table des matières, vous accéderez automatiquement à la bonne page. Nous vous y présentons les couleurs, les tailles et les formes possibles de chaque tapis.



**Discover our Acsento collections in more detail through this interactive catalogue.** By clicking on the name of the desired carpet in the table of contents, you will automatically navigate to the correct page. There, we show you the possible colours, sizes and shapes of each carpet.



**Entdecken Sie unsere Acsento-Kollektionen in diesem interaktiven Katalog genauer.** Wenn Sie im Inhaltsverzeichnis auf den Namen des gewünschten Teppichs klicken, werden Sie automatisch auf die richtige Seite weitergeleitet. Dort zeigen wir Ihnen die möglichen Farben, Größen und Formen der einzelnen Teppiche.

## FLANDERS

Bolzano	64
Chiara 826	16
Chiara 949	18
Chiara 1016	12
Chiara 1018	14
Chiara 1097	6
Chiara Ivory	8
Chiara Waves	10
Classico 961-963	34
Curzo	48
Diamo	68
Ecstasy	72
Faro 880	20
Faro 884	22
Freek	70
Geometrics	66
Grunge	62
Himalaya	32
Loni 105	28
Loni 3128	30
Meda	60
Merron	46
Mila 011	24
Mila 016	26
Mystic	50
Nuance	56
Rabat	54
Tara Deluxe	40
Venice	36

## HANDMADE

Bastia	80
Corfu	76
Corte	82
Elba	88
Kreta	90
Madeira	98
Napoli	96
Pella	92
Piana	84
Ravenna	94
<b>Organic Shapes</b>	<b>44</b>

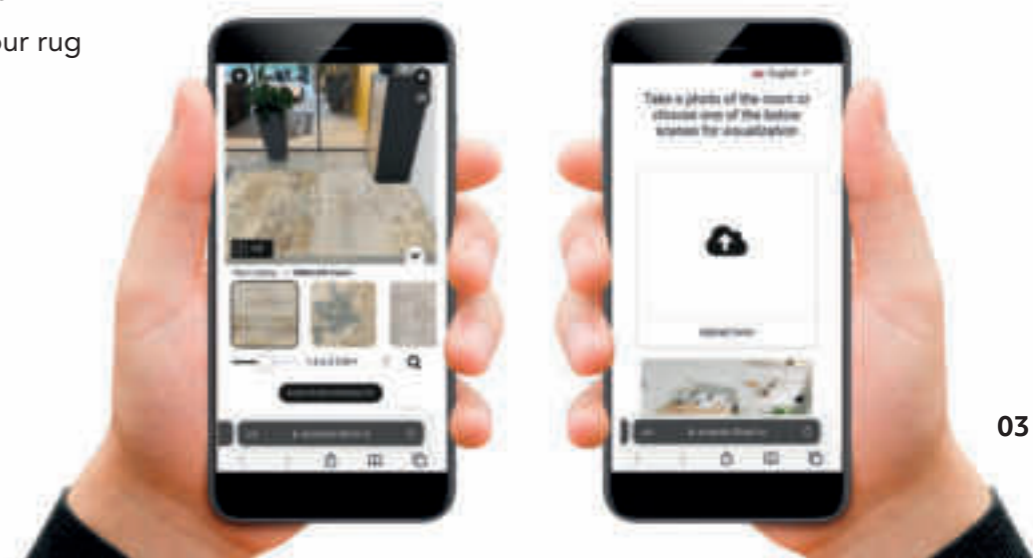


## Augmented Reality

Visualize your rug with Augmented Reality and integrate it in your interior

**With your smartphone or tablet:**

- Scan the QR code on your sample or on the desired page of your catalogue
- Take a picture of the area where you want to visualize or upload a photo of your interior
- Choose the color and the dimensions of your rug



03

**On the Acvento webshop:**

- Choose a rug and click on the HOME VISUALIZER button
- Upload a photo of your interior or choose an existing setting
- Click on the location where you would like to place the rug, then choose the color and dimensions of your rug

[webshop.acvento.com](https://webshop.acvento.com)





# Flanders collection

05



Timeless perfection,  
ecological products  
woven in local weaving mills.

# Chiara 1097

## QUALITY

- viscose, wool
- 1550g/m<sup>2</sup> - 4 mm
- machine made - Belgium



[back to index](#)

## STANDARD SIZES

- 160x230 cm
- 200x290 cm
- 240x340 cm
- 280x380 cm

## SPECIAL SIZES

- max width 280 cm
- max length 380 cm

## SHAPES



## DELIVERY

- standard sizes: 2 weeks
- special sizes: 4 weeks



beige /taupe green



beige/stone



ivory /warm beige



Ivory/ivory



# Chiara Ivory

## QUALITY

- viscose, wool
- 1550g/m<sup>2</sup> - 4 mm
- machine made - Belgium

## STANDARD SIZES

- 160x230 cm
- 200x290 cm
- 240x340 cm
- 280x380 cm

## SPECIAL SIZES

- max width 280 cm
- max length 380 cm

## SHAPES



## DELIVERY

- standard sizes: 2 weeks
- special sizes: 4 weeks



quadra - ivory/ivory



diabolo - ivory/ivory



horizon - ivory/ivory



waves - ivory/ivory



# Chiara Waves

## QUALITY

- viscose, wool
- 1550g/m<sup>2</sup> - 4 mm
- machine made - Belgium

## STANDARD SIZES

- 160x230 cm
- 200x290 cm
- 240x340 cm
- 280x380 cm

## SPECIAL SIZES

- max width 280 cm
- max length 380 cm

## SHAPES



## DELIVERY

- standard sizes: 2 weeks
- special sizes: 4 weeks



grey/grey



grey/cognac



grey/gold



ivory/ivory



# Chiara 1016

## QUALITY

- viscose, wool
- 1550g/m<sup>2</sup> - 4 mm
- machine made - Belgium

## STANDARD SIZES

- 160x230 cm
- 200x290 cm
- 240x340 cm
- 280x380 cm

## SPECIAL SIZES

- max width 280 cm
- max length 380 cm

## SHAPES



## DELIVERY

- standard sizes: 2 weeks
- special sizes: 4 weeks



beige/beige



grey/anthracite



grey/blue



beige/gold





# Chiara 1018

## QUALITY

- viscose, wool
- 1550g/m<sup>2</sup> - 4 mm
- machine made - Belgium

## STANDARD SIZES

- 160x230 cm
- 200x290 cm
- 240x340 cm
- 280x380 cm

## SPECIAL SIZES

- max width 280 cm
- max length 380 cm

## SHAPES



[back to index](#)

## DELIVERY

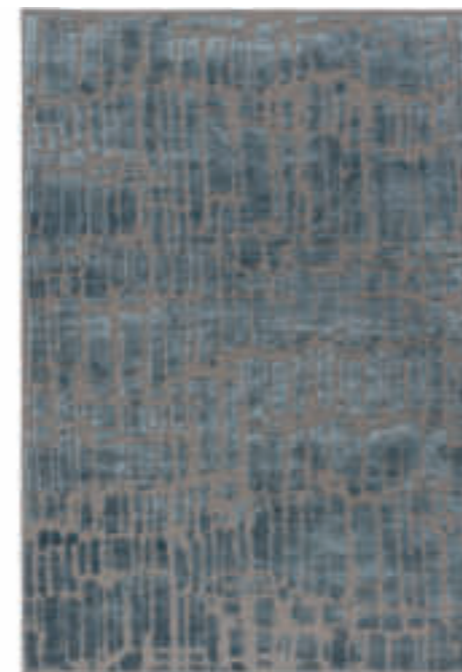
- standard sizes: 2 weeks
- special sizes: 4 weeks



beige/beige



grey/tobacco



grey/blue



beige/gold



[back to index](#)

# Chiara 826

## QUALITY

- viscose, wool
- 1550g/m<sup>2</sup> - 4 mm
- machine made - Belgium

## STANDARD SIZES

- 160x230 cm
- 200x290 cm
- 240x340 cm
- 280x380 cm

## SPECIAL SIZES

- max width 280 cm
- max length 380 cm

## SHAPES



## DELIVERY

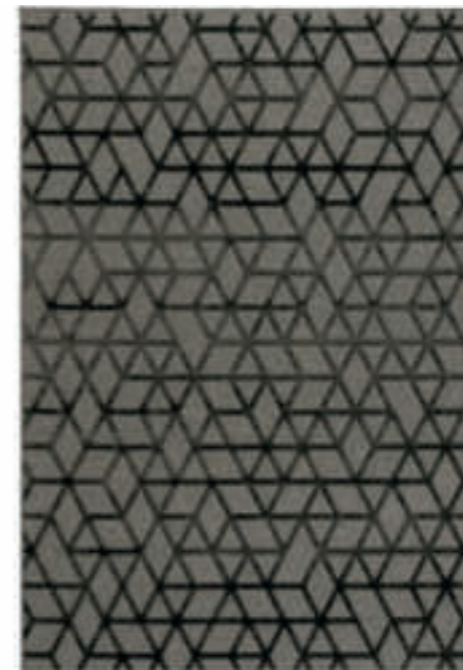
- standard sizes: 2 weeks
- special sizes: 4 weeks



grey/red



beige/off-white



grey/anthracite



beige/grey



# Chiara 949

## QUALITY

- viscose, wool
- 1550g/m<sup>2</sup> - 4 mm
- machine made - Belgium

## STANDARD SIZES

- 160x230 cm
- 200x290 cm
- 240x340 cm
- 280x380 cm

## SPECIAL SIZES

- max width 280 cm
- max length 380 cm

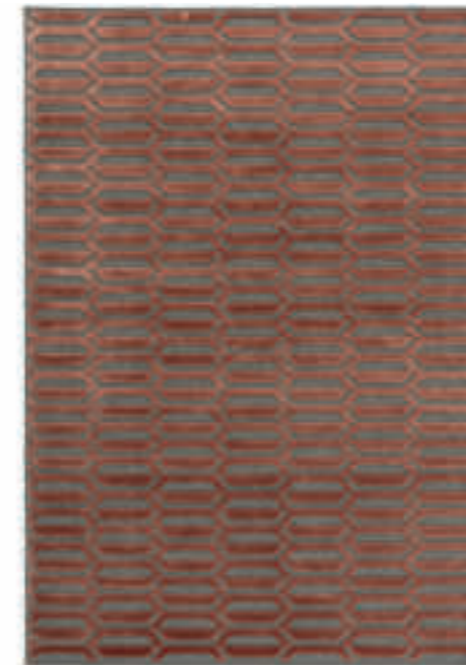
## SHAPES



[back to index](#)

## DELIVERY

- standard sizes: 2 weeks
- special sizes: 4 weeks



grey/red



grey/beige



grey/anthracite



beige/beige



# Faro 880

## QUALITY

- viscose, polyester
- 1600g/m<sup>2</sup> - 3,5 mm
- machine made - Belgium

## STANDARD SIZES

- 160x230 cm
- 200x300 cm
- 240x340 cm
- 280x380 cm

## SPECIAL SIZES

- max width 280 cm
- max length 380 cm

## SHAPES



[back to index](#)

## DELIVERY

- standard sizes: 2 weeks
- special sizes: 4 weeks



olive



brown/black



grey/silver



beige/gold



# Faro 884

## QUALITY

- viscose, polyester
- 1600g/m<sup>2</sup> - 3,5 mm
- machine made - Belgium



[back to index](#)

## STANDARD SIZES

- 160x230 cm
- 200x300 cm
- 240x340 cm
- 280x380 cm

## SPECIAL SIZES

- max width 280 cm
- max length 380 cm

## SHAPES



## DELIVERY

- standard sizes: 2 weeks
- special sizes: 4 weeks



silver



grey



blue



brown/black



# Mila 011

## QUALITY

- wool, viscose
- 1600g/m<sup>2</sup> - 4 mm
- machine made - Belgium



[back to index](#)

## STANDARD SIZES

- 160x230 cm
- 200x290 cm
- 240x340 cm
- 280x380 cm

## SPECIAL SIZES

- max width 280 cm
- max length 380 cm

## SHAPES



## DELIVERY

- standard sizes: 2 weeks
- special sizes: 4 weeks



beige



silver



grey



red



# Mila 016

## QUALITY

- wool, viscose
- 1600g/m<sup>2</sup> - 4 mm
- machine made - Belgium

## STANDARD SIZES

- 160x230 cm
- 200x290 cm
- 240x340 cm
- 280x380 cm

## SPECIAL SIZES

- max width 280 cm
- max length 380 cm

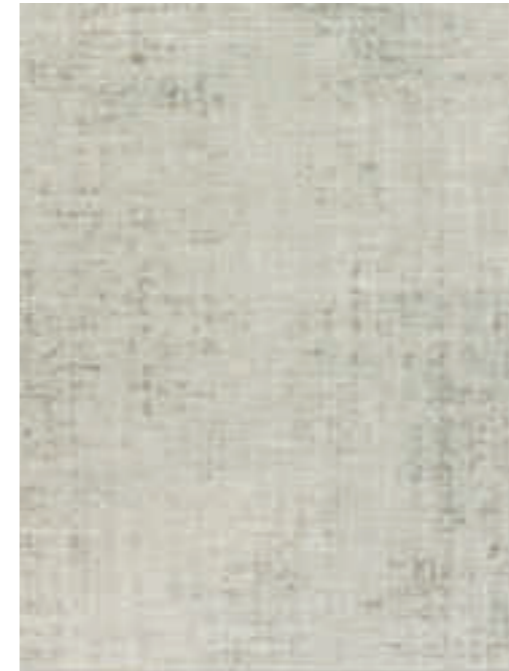
## SHAPES



[back to index](#)

## DELIVERY

- standard sizes: 2 weeks
- special sizes: 4 weeks



beige



silver



grey



blue



# Loni 105

## QUALITY

- viscose, wool
- 1600g/m<sup>2</sup> - 4 mm
- machine made - Belgium

## STANDARD SIZES

- 160x230 cm
- 200x290 cm
- 240x340 cm
- 280x380 cm

## SPECIAL SIZES

- max width 280 cm
- max length 380 cm

## SHAPES



## DELIVERY

- standard sizes: 2 weeks
- special sizes: 4 weeks



beige



grey



bronze



blue





# Loni 3128

## QUALITY

- viscose, wool
- 1600g/m<sup>2</sup> - 4 mm
- machine made - Belgium

## STANDARD SIZES

- 160x230 cm
- 200x290 cm
- 240x340 cm
- 280x380 cm

## SPECIAL SIZES

- max width 280 cm
- max length 380 cm

## SHAPES



## DELIVERY

- standard sizes: 2 weeks
- special sizes: 4 weeks



beige



grey



bronze



ocher



# Himalaya

## QUALITY

- viscose, polyester
- 2200g/m<sup>2</sup> - 7,5 mm
- machine made - Belgium

## STANDARD SIZES

- 160x230 cm
- 200x300 cm
- 240x340 cm
- 280x380 cm

## SPECIAL SIZES

- max width 280 cm
- max length 380 cm

## SHAPES



## DELIVERY

- standard sizes: 2 weeks
- special sizes: 4 weeks

[back to index](#)



809 beige/off-white



810 beige/off-white



840 off-white/blue



878 grey/beige



# Classico 961-963

## QUALITY

- viscose
- 1700g/m<sup>2</sup> - 3,5 mm
- machine made - Belgium

## STANDARD SIZES

- 160x230 cm
- 200x290 cm
- 240x340 cm
- 280x380 cm

## DELIVERY

- standard sizes: 2 weeks



des. 961 – stone 475



des. 961 – stone 477



des. 963 – stone 475



des. 963 – stone 477



# Venice

## QUALITY

- viscose
- 840g/m<sup>2</sup> - 3,5 mm
- machine made - Belgium

## STANDARD SIZES

- 160x230 cm
- 200x290 cm

## DELIVERY

- standard sizes: 2 weeks

[back to index](#)



des. 9792 – beige/aqua



des. 9810 – beige/grey



des. 9883 – anthracite/multicolour



des. 9898 – beige/grey



# Venice

## QUALITY

- viscose
- 840g/m<sup>2</sup> - 3,5 mm
- machine made - Belgium

## STANDARD SIZES

- 160x230 cm
- 200x290 cm

## DELIVERY

- standard sizes: 2 weeks

[back to index](#)



des. 9930 – stone/anthracite



des. 9937 – red multicolour



des. 9994 – beige



des. 9994 – stone



# Tara Deluxe

## QUALITY

- polyester microfiber
- 3000g/m<sup>2</sup> - 7,5 mm
- machine made - Belgium

## STANDARD SIZES

- 160x230 cm
- 200x290 cm
- 240x340 cm

## SPECIAL SIZES

- minimum 3 m<sup>2</sup>
- max width 390 cm

## SHAPES



## DELIVERY

- standard sizes: 2 weeks
- special sizes: 3 weeks

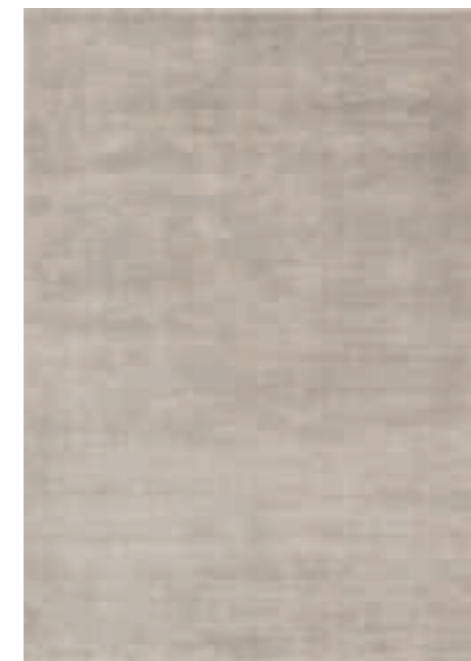
[back to index](#)



beige



light grey



taupe



anthracite



# Tara Deluxe

## QUALITY

- polyester microfiber
- 3000g/m<sup>2</sup> - 7,5 mm
- machine made - Belgium

## STANDARD SIZES

- 160x230 cm
- 200x290 cm
- 240x340 cm

## SPECIAL SIZES

- minimum 3 m<sup>2</sup>
- max width 390 cm

## SHAPES



[back to index](#)

## DELIVERY

- standard sizes: 2 weeks
- special sizes: 3 weeks



gold



olive green



rust



navy

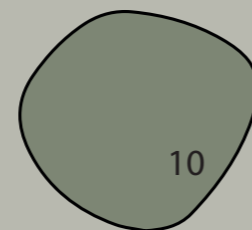
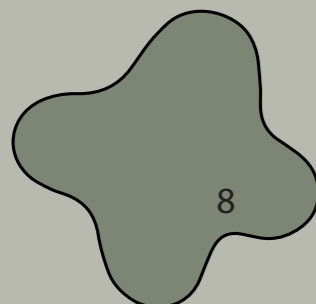
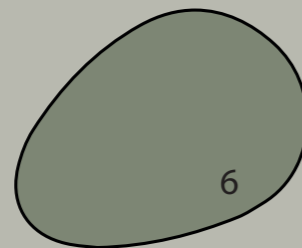
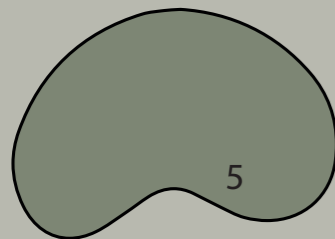
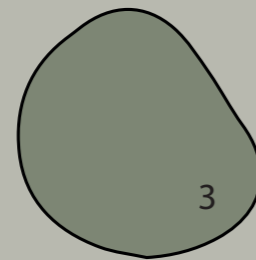
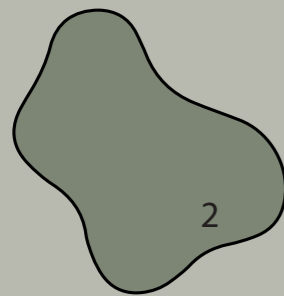
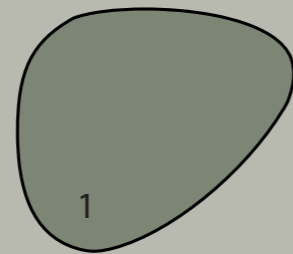


# Organic shapes

## Let your imagination run wild

All rugs with the remark "custom size" can be custom made in the shapes below.

*Feel free to ask for a quotation or other specific shapes.*





# Merron

## QUALITY

- acrylic, polyester, viscose, cotton
- chenille - 1540g/m<sup>2</sup> - 3,5 mm
- machine made - Belgium

## STANDARD SIZES

- 170x230 cm
- 200x300 cm
- 240x340 cm

## DELIVERY

- standard sizes: 2 weeks

[back to index](#)



beige



gold



graphite



grey



# Curzo

## QUALITY

- acrylic, polyester, viscose, cotton
- chenille - 1540g/m<sup>2</sup> - 3,5 mm
- machine made - Belgium

## STANDARD SIZES

- 170x230 cm
- 200x300 cm
- 240x340 cm

## DELIVERY

- standard sizes: 2 weeks

[back to index](#)



taupe



basalt



stone



natural



# Mystic

## QUALITY

- acrylic, polyester, viscose, cotton
- chenille - 1540g/m<sup>2</sup> - 3,5 mm
- machine made - Belgium

## STANDARD SIZES

- 170x230 cm
- 200x300 cm
- 240x340 cm
- 320x420 cm

## SPECIAL SIZES

- max width 320 cm
- max length 420 cm

## SHAPES



[back to index](#)

## DELIVERY

- standard sizes: 2 weeks
- special sizes: 4 weeks



silver



taupe



olive



bronze



# Mystic

## QUALITY

- acrylic, polyester, viscose, cotton
- chenille - 1540g/m<sup>2</sup> - 3,5 mm
- machine made - Belgium

## STANDARD SIZES

- 170x230 cm
- 200x300 cm
- 240x340 cm
- 320x420 cm

## SPECIAL SIZES

- max width 320 cm
- max length 420 cm

## SHAPES



[back to index](#)

## DELIVERY

- standard sizes: 2 weeks
- special sizes: 4 weeks



navy



anthracite



grey



aubergine



# Rabat

## QUALITY

- acrylic, polyester, viscose, cotton
- chenille - 1540g/m<sup>2</sup> - 3,5 mm
- machine made - Belgium

## STANDARD SIZES

- 170x230 cm
- 200x300 cm
- 240x340 cm

## SPECIAL SIZES

- max width 240 cm
- max length 340 cm

## SHAPES



## DELIVERY

- standard sizes: 2 weeks
- special sizes: 4 weeks

[back to index](#)



silver grey



blue taupe



green taupe



gold



[back to index](#)

# Nuance

## QUALITY

- acrylic, polyester, viscose, cotton
- chenille - 1540g/m<sup>2</sup> - 3,5 mm
- machine made - Belgium

## STANDARD SIZES

- 170x230 cm
- 200x300 cm
- 240x340 cm

## SPECIAL SIZES

- max width 240 cm
- max length 340 cm

## SHAPES



## DELIVERY

- standard sizes: 2 weeks
- special sizes: 4 weeks



green



olive



silver



grey



# Grunge

## QUALITY

- acrylic, polyester, viscose, cotton
- chenille - 1540g/m<sup>2</sup> - 3,5 mm
- machine made - Belgium



[back to index](#)

## STANDARD SIZES

- 155x230 cm
- 200x290 cm
- 240x340 cm
- 320x420 cm
- Ø 200 cm

## SPECIAL SIZES

- max width 320 cm
- max length 420 cm

## SHAPES



## DELIVERY

- standard sizes: 2 weeks
- special sizes: 4 weeks



ice



sand



sage



moon



# Meda

## QUALITY

- acrylic, polyester, viscose, cotton
- chenille - 1540g/m<sup>2</sup> - 3,5 mm
- machine made - Belgium

## STANDARD SIZES

- 170x230 cm
- 200x300 cm
- 240x340 cm

## DELIVERY

- standard sizes: 2 weeks

[back to index](#)



beige



rust



denim



wine red





# Meda

## QUALITY

- acrylic, polyester, viscose, cotton
- chenille - 1540g/m<sup>2</sup> - 3,5 mm
- machine made - Belgium

## STANDARD SIZES

- 170x230 cm
- 200x300 cm
- 240x340 cm

## DELIVERY

- standard sizes: 2 weeks

[back to index](#)



silver



grey



metallic



old pink



# Bolzano

## QUALITY

- acrylic, polyester, viscose, cotton
- chenille - 1540g/m<sup>2</sup> - 3,5 mm
- machine made - Belgium

## STANDARD SIZES

- 170x230 cm
- 200x300 cm
- 240x340 cm

## SPECIAL SIZES

- max width 240 cm
- max length 340 cm

## SHAPES



[back to index](#)

## DELIVERY

- standard sizes: 2 weeks
- special sizes: 4 weeks



beige



bronze



army green



grey



# Geometrics

## QUALITY

- acrylic, polyester, viscose, cotton
- chenille - 1540g/m<sup>2</sup> - 3,5 mm
- machine made - Belgium

## STANDARD SIZES

- 170x230 cm
- 200x300 cm
- 240x340 cm

## DELIVERY

- standard sizes: 2 weeks

[back to index](#)



coates grey



infini taupe



rombina beige/black



nika silver



# Diamo

## QUALITY

- acrylic, polyester
- chenille - 1150g/m<sup>2</sup> - 3,5 mm
- machine made - Belgium

## STANDARD SIZES

- 155x230 cm
- 200x300 cm

## SPECIAL SIZES

- max width 200 cm
- max length 300 cm

## SHAPES



[back to index](#)

## DELIVERY

- standard sizes: 2 weeks
- special sizes: 4 weeks



brown



cognac



ice



silver

IN- AND OUTDOOR USE



# Freek

## QUALITY

- polypropylene, PES
- chenille - 1080g/m<sup>2</sup> - 3 mm
- machine made - Belgium

## STANDARD SIZES

- 160x230 cm
- 200x300 cm

## DELIVERY

- standard sizes: 2 weeks

[back to index](#)



IN- AND OUTDOOR USE



carbon



green



silver



taupe



# Ecstasy

## QUALITY

- polypropylene, PES
- chenille - 1080g/m<sup>2</sup> - 3 mm
- machine made - Belgium

## STANDARD SIZES

- 160x230 cm
- 200x300 cm

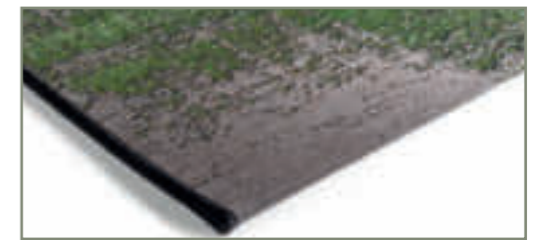
## DELIVERY

- standard sizes: 2 weeks

[back to index](#)



IN- AND OUTDOOR USE



grey/black



red



green



multicolour





# Handmade collection

75



Unique, luxury, handwoven,  
honest and ecological products

# Corfu

## QUALITY

- recycled nylon, cotton backing
- handloom – 3400 g/m<sup>2</sup> - 8 mm
- origin - India

## STANDARD SIZES

- 160x230 cm
- 200x290 cm
- 240x340 cm

## SPECIAL SIZES

- minimum 3m<sup>2</sup>
- max width 500 cm

## SHAPES



[back to index](#)

## DELIVERY

- standard sizes: 2 weeks
- special sizes: 14 weeks

*For a faster delivery please ask for a quotation*



ivory



silver



sage



egg blue





# Corfu

## QUALITY

- recycled nylon, cotton backing
- handloom – 3400 g/m<sup>2</sup> - 8 mm
- origin - India

## STANDARD SIZES

- 160x230 cm
- 200x290 cm
- 240x340 cm

## SPECIAL SIZES

- minimum 3m<sup>2</sup>
- max width 500 cm

## SHAPES



[back to index](#)

## DELIVERY

- standard sizes: 2 weeks
- special sizes: 14 weeks

*For a faster delivery please ask for a quotation*



rust



hunter



taupe



charcoal



# Bastia

## QUALITY

- wool, cotton backing
- handtuft – 3800 g/m<sup>2</sup> - 8 mm
- origin - India

## STANDARD SIZES

- 160x230 cm
- 200x290 cm
- 240x340 cm

## DELIVERY

- standard sizes: 2 weeks

[back to index](#)



beige



multicolor



# Corte

## QUALITY

- wool, cotton backing
- handtuft – 3800 g/m<sup>2</sup> - 8 mm
- origin - India

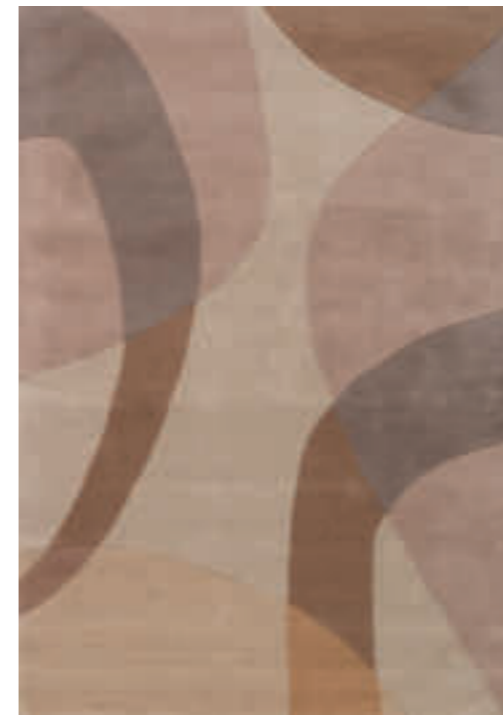
## STANDARD SIZES

- 160x230 cm
- 200x290 cm
- 240x340 cm

## DELIVERY

- standard sizes: 2 weeks

[back to index](#)



natural



yellow



# Piana

## QUALITY

- wool, cotton backing
- handtuft – 3800 g/m<sup>2</sup> - 5 to 8 mm
- origin - India

## STANDARD SIZES

- 160x230 cm
- 200x290 cm
- 240x340 cm
- stone shape 200x290 cm

## DELIVERY

- standard sizes: 2 weeks

[back to index](#)



off-white



dark beige



light grey



green



# Piana

stone shape

## QUALITY

- wool, cotton backing
- handtuft – 3800 g/m<sup>2</sup> - 5 to 8 mm
- origin - India

## STANDARD SIZES

- 160x230 cm
- 200x290 cm
- 240x340 cm
- stone shape 200x290 cm

## DELIVERY

- standard sizes: 2 weeks

[back to index](#)



stone shape



off-white



dark beige



light grey



green



# Elba

## QUALITY

- wool, cotton
- handloom - 2500g/m<sup>2</sup> - 10 mm
- origin - India

## STANDARD SIZES

- 160x230 cm
- 200x290 cm
- 240x340 cm

## DELIVERY

- standard sizes : 2 weeks

[back to index](#)



white



beige



brown



dark brown



# Kreta

## QUALITY

- modified polyester, PET, cotton backing
- handloom - 4920g/m<sup>2</sup> - 22 mm
- origin - India



[back to index](#)

## STANDARD SIZES

- 160x230 cm
- 200x290 cm
- 240x340 cm

## SPECIAL SIZES

- minimum 3m<sup>2</sup>
- max width 390 cm

## SHAPES



## DELIVERY

- standard sizes: 2 weeks
- special sizes: 3 weeks



beige



cream



mouse grey



warm grey



# Pella

## QUALITY

- modified polyester, PET, cotton backing
- handloom - 3000g/m<sup>2</sup> - 42 mm
- origin - India

## STANDARD SIZES

- 160x230 cm
- 200x290 cm
- 240x340 cm

## SPECIAL SIZES

- minimum 3m<sup>2</sup>
- max width 390 cm

## SHAPES



## DELIVERY

- standard sizes: 2 weeks
- special sizes: 3 weeks



champagne



green mix



taupe



white





# Ravenna

## QUALITY

- wool, viscose, cotton
- pitloom - 2900g/m<sup>2</sup> - 20 mm
- origin - India

## STANDARD SIZES

- 160x230 cm
- 200x290 cm
- 240x340 cm

## DELIVERY

- standard sizes: 2 weeks

[back to index](#)



green mix



silver



taupe



white



# Napoli

## QUALITY

- wool, viscose, cotton
- handloom - 3900g/m<sup>2</sup> - 15 mm
- origin - India

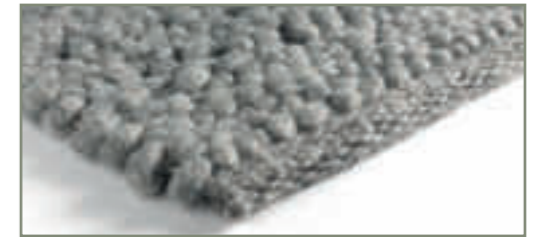
## STANDARD SIZES

- 160x230 cm
- 200x290 cm
- 240x340 cm

## DELIVERY

- standard sizes: 2 weeks

[back to index](#)



grey



natural mix



silver



taupe



# Madeira

## QUALITY

- PET yarn
- handwoven - 1700g/m<sup>2</sup> - 6 mm
- origin - India

## STANDARD SIZES

- Ø 150 cm
- Ø 200 cm

## DELIVERY

- standard sizes: 2 weeks

[back to index](#)



beige/grey/white



anthracite/grey/white

IN- AND OUTDOOR USE



# Maintenance & stain removal

The cleaning and maintenance label James has developed a number of unique services to help you in every situation.

One such free and unique service is

“James’ personal maintenance advice”

## Cleaning with water

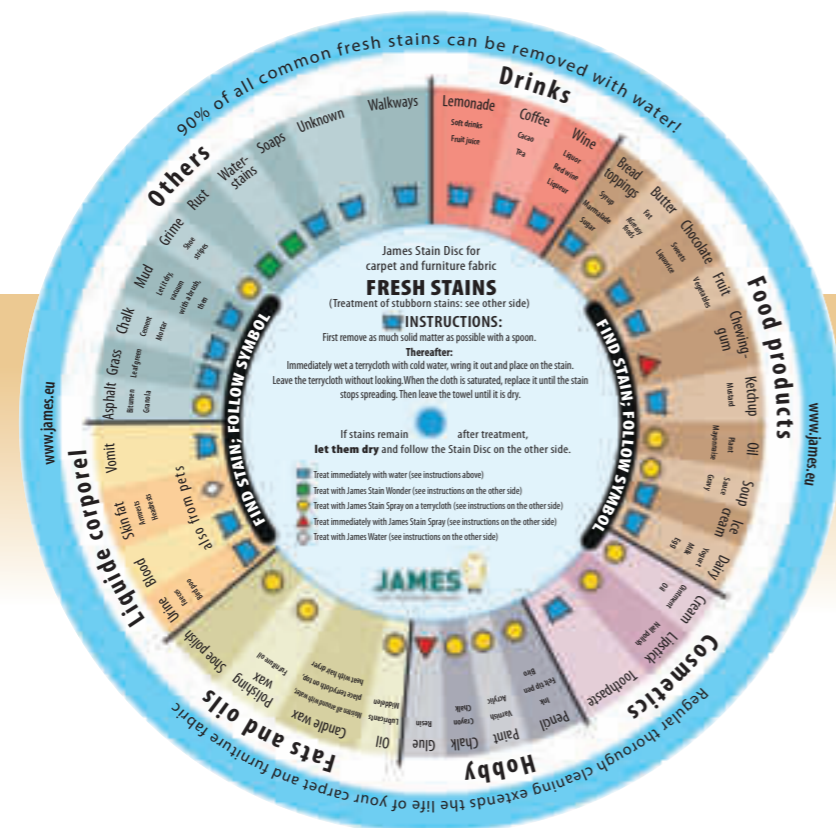
James is the only manufacturer of cleaning agents that states on the James stain disc and on the website that 90 percent of all fresh stains can be removed with water! James Stain Wonder’s labels even state that you can use it, but that you must first perform a test.

## Accurate dosing

James always accurately indicates the dosage when applying the cleaning products. If you adhere to the regulations, the product will work optimally and your carpet will be spotless again!

## Avoid sharp objects

In addition to following our cleaning and maintenance advice for your carpet, we recommend that you do not place pointy or sharp objects/ furniture on the carpet.





**Aciento bv**

Luipaardstraat 12 - 8500 Kortrijk - Belgium

+32 (0)56 51 45 71

info@aciento.com

**www.aciento.com**