



CY CASI

INDIVIDUAL LUXURY INTERIOR PHILOSOPHY

BESPOKE & COLLECTION

I N D I V I D U A L L U X U R Y I N T E R I O R P H I L O S O P H Y



GENERAL CATALOGUE NUMBER ONE

THE MOST
BEAUTIFUL
IDEAS
ARE THESE
THAT MAKE
LIFE
MORE
BEAUTIFUL

Coen Munsters
Co-Founder & Designer



ABOUT CYCASI

PHILOSOPHY

Cycasi is Dutch design, creating new combinations of lines and structures without the restrictions to the past.

The designs by Cycasi are a unique expression of character and emotion. Tables and exclusive interior elements for luxury private residence and hospitality. Areas with the aim of changing the identity and experience of a space.

We give interiors a new revolutionary turn in design; artistic, eclectic, a little bit extraordinary in amazing ways combined, but in the end always elegant. The modern technical music is the base for our inspiration. As also you can translate modern music in beautiful classic music parts and of course the other way around. It gives the Cycasi collection a new high progressive imagination.

The Cycasi interior elements are handcrafted in our ateliers in the Netherlands and Germany. Each item is manufactured with craftsmanship by our professional teams according to the highest eye-catching quality, artistry and with focus on detail.

Cycasi offers enormous flexibility for customizing and the possibility to develop bespoke projects. Discover our collection and be inspired of our extra ordinary designs with expression and passion in our showroom and of course in this catalogue.

We say welcome to all into our world of individual luxury interior philosophy.

On behalf your Cycasi team,

With kindest regards,

Coen Munsters,
Jan Peeters

PASSION

Founded with the first rational to create without restrictions with designers and architects for people who want to give interior an extension of their own personality and lifestyle.

With years of experience as a designer of well-known light objects, Co-Founder Coen Munsters is responsible for the design of the Cycasi collection. Together with Co-Founder Jan Peeters who is professional in the field of exclusive materials, results in extravagant fassionating items with an eclectic combination of design and material.



INTERIOR.
EXCLUSIVITY.
BEAUTY.
BUSINESS.



WE SAY WELCOME
TO ARCHITECTS, DESIGNERS
AND PROFESSIONALS
IN INTERIOR BUSINESS.
CHALLENGE US
WITH YOUR IDEAS AND CREATIONS
TO COMMUNICATE
AND WORK IT OUT TOGETHER!

CYCASI CONTRACT & BESPOKE

GROUP POLISHED SURFACES

TOP OF COMPOSIT.

HYBRIT SURFACE OF PREMIUM MINERALS AND QUARTZ,
 MORE ADVANCED AND SUSTAINABLE ON THE MARKET.
 IT ALSO IS HIGHLY RESISTENT TO STAINS AND ACIDS COMMON
 IN EVERYDAY USE AND IS EASY TO MAINTAIN.
 AS WELL WITH HIGH LEVEL OF RESISTANCE TO SCRATCHES AND IMPACTS
 ALLOWS HANDLING OF VERY HARD OBJECTS WITHOUT ANY WORRY.
 THE COLOR IS INTENSE AND COSISTENT.

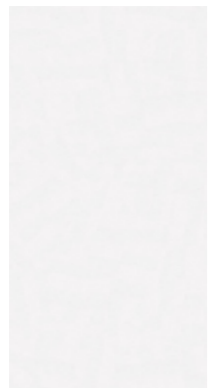
ALL EDGES OF TOPS HAVE THE SAME DECORATION AS THE SURFACE OF THE TOP.

GROUP HIGH GLOSS POLISHED SURFACES

TOP OF COMPOSIT.

INNOVATIVE, ULTRA COMPACT AND HIGH PERFORMANCE SURFACE
 AND HIGHLY RESISTANT TO STAIN AND SCRATCH.
 IT WITHSTANCE HIGH TEMPRATURES. EXTREME HEAT WON'T DAMAGE
 IT'S SURFACE AND IT IS ALSO HIGH UV RESISTANT.
 SURFACES ARE EXTREMELY 'XXL' GLOSSY. IT IS ALMOST IMPOSSIBLE
 TO DAMAGE ITS SURFACE EVEN RED WINE IS NO PROBLEM.

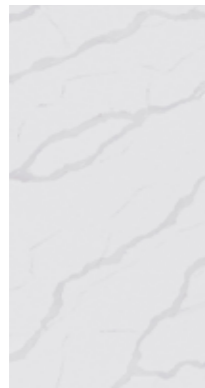
ALL EDGES OF TOPS WITH THICKNESS 1.2 CM AND 2 CM HAVE A MATCHED COLOR WITH THE DECORATION ON THE SURFACE OF THE TOP.
 ALL EDGES OF TOPS WITH THICKNESS MORE THAN 4 CM HAVE THE SAME DECORATIONS AS THE SURFACE OF THE TOP.



NEW DAWN WHITE

TOP CODE
110

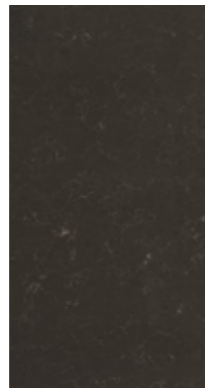
FULL IMAGE ON
PAGE 148



ANTARTIC

TOP CODE
115

FULL IMAGE ON
PAGE 148



CARUSO

TOP CODE
120

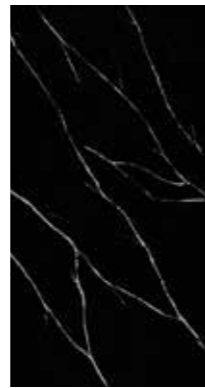
FULL IMAGE ON
PAGE 149



LA NOCHE BLACK

TOP CODE
125

FULL IMAGE ON
PAGE 149



EQUINOX

TOP CODE
130

FULL IMAGE ON
PAGE 150



FROZEN GOLD

TOP CODE
210

FULL IMAGE ON
PAGE 150



MIDNIGHT GOLD

TOP CODE
215

FULL IMAGE ON
PAGE 151



MONTANA

TOP CODE
220

FULL IMAGE ON
PAGE 151



ETERNITY

TOP CODE
225

FULL IMAGE ON
PAGE 152



INDIAN SUMMER

TOP CODE
230

FULL IMAGE ON
PAGE 152



ESSENCE

TOP CODE
235

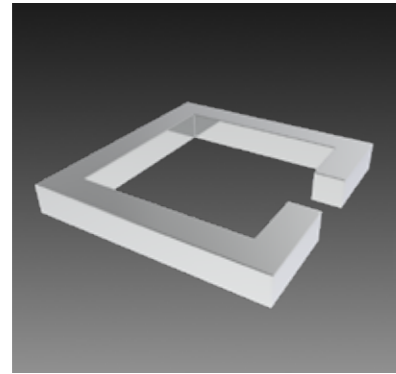
FULL IMAGE ON
PAGE 153



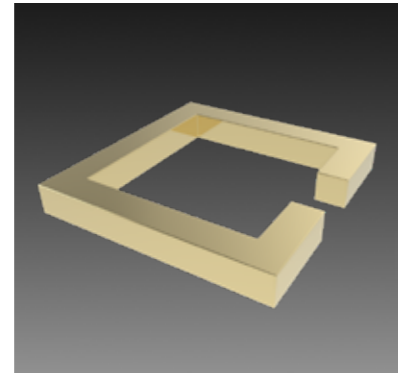
TACANDA

TOP CODE
240

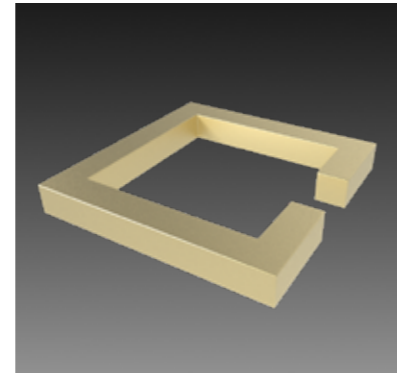
FULL IMAGE ON
PAGE 153



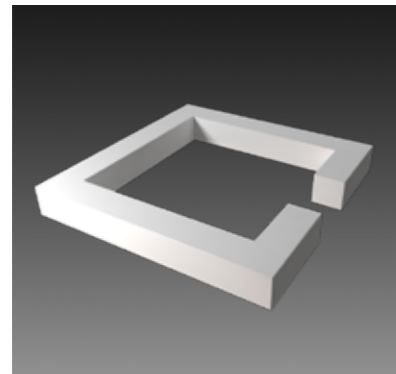
CHROME
BRILLIANT FINISHING CODE
300



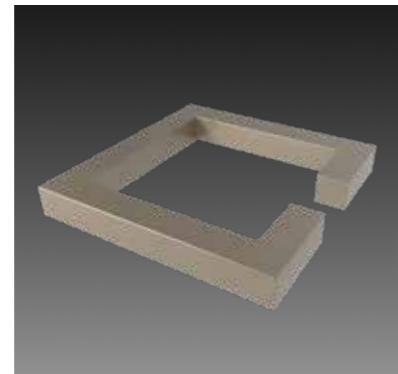
BRASS
BRILLIANT FINISHING CODE
301



GOLD
SATIN FINISHING CODE
302



WHITE
STRUCTURE FINISHING CODE
303



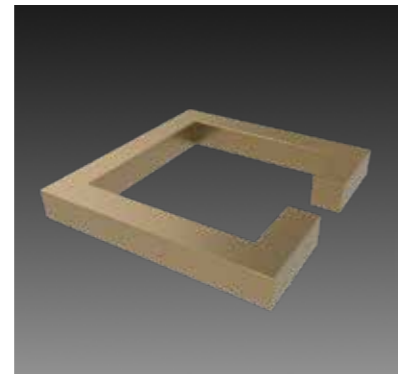
CHAMPAGNE
STRUCTURE SOFT GLOSS FINISHING CODE
304



BRONZE DEORE
STRUCTURE FINISHING CODE
305



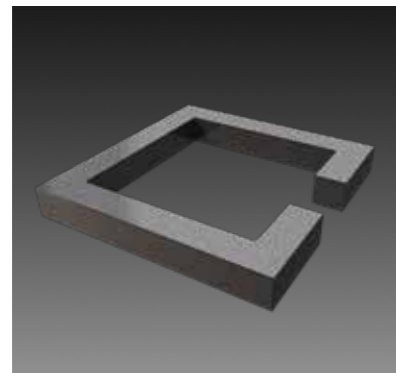
BRONZE DEORE
SOFT GLOSS FINISHING CODE
306



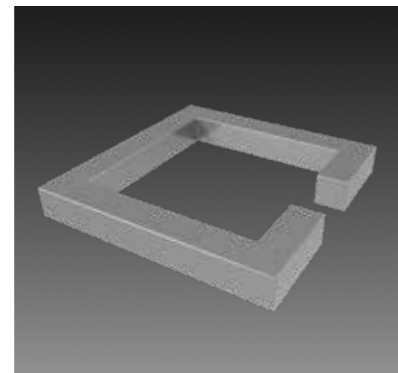
GOLD LUXURY
SOFT GLOSS FINISHING CODE
307



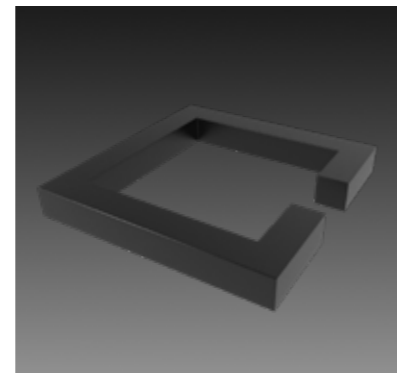
BRONZE
SOFT GLOSS FINISHING CODE
308



ANTHRACITE
STRUCTURE METALLIC FINISHING CODE
309



GREY
SOFT GLOSS FINISHING CODE
310



BLACK
STRUCTURE FINISHING CODE
311

METAL FINISHINGS



COLLECTION

TABLES 20
PAGE

ROOM DIVIDERS 148
PAGE

WALL ART ELEMENTS 156
PAGE

CANDLE HOLDERS 174
PAGE

TABLE TOPS FULL IMAGES 186
PAGE

CEILING ELEMENTS
SOON IN COLLECTION

TABLE COLLECTION

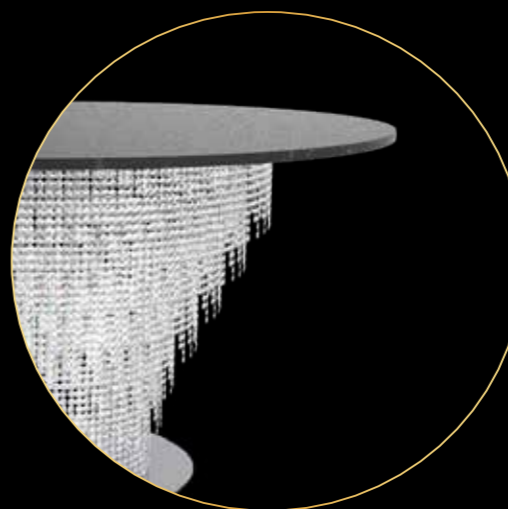
20
OCEAN DRIVE



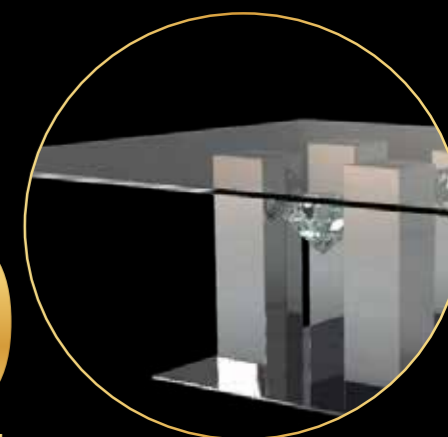
36
CARATS FOR YOU



120
CRYSTAL LADY



110
QUATTRO DEL 4



50
CYCLES



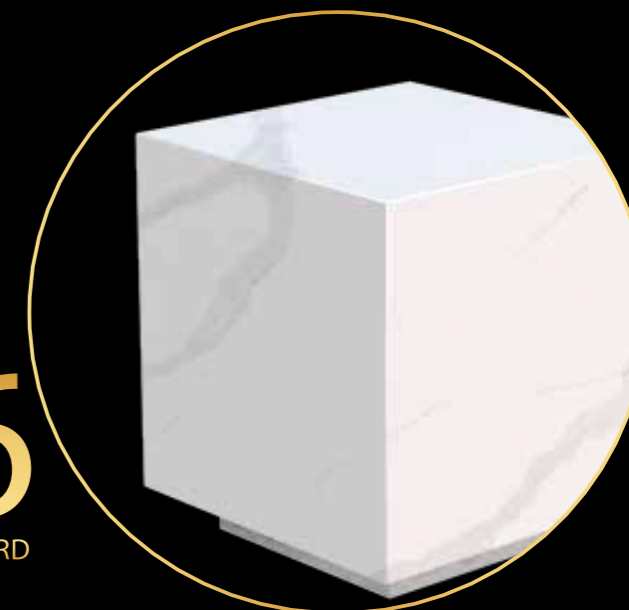
76
SWING AROUND



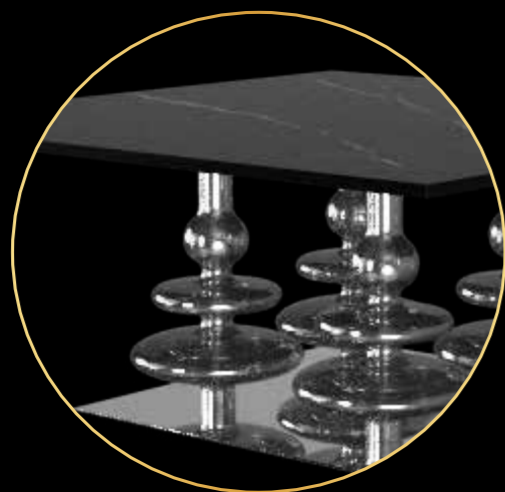
148
ROOMDEVIDERS



136
GRAND BOULEVARD



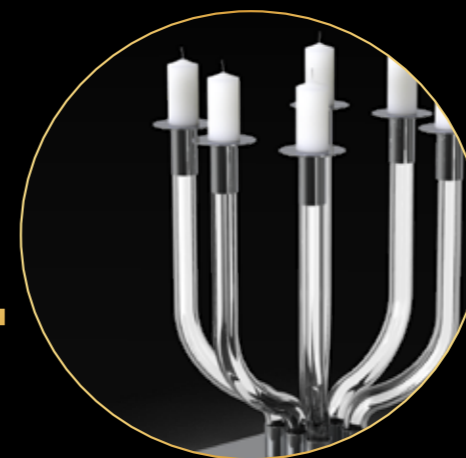
88
MOONWAVE



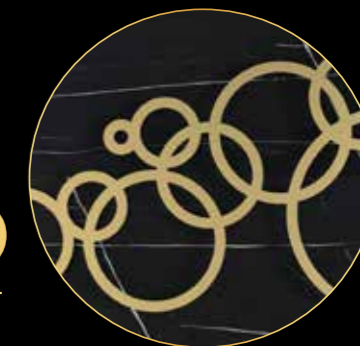
102
BESIDE ME



174
CANDLE HOLDERS

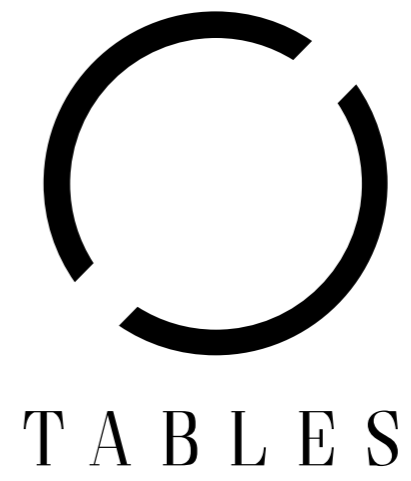


156
WALL ART



186
MATERIALS & GENERAL





T A B L E S

Ocean drive

DESIGN BY COEN MUNSTERS



DINING TABLE DT 260 / TOP EQUINOX



DINING TABLE DT 260 / TOP LA NOCHE BLACK

Ocean drive

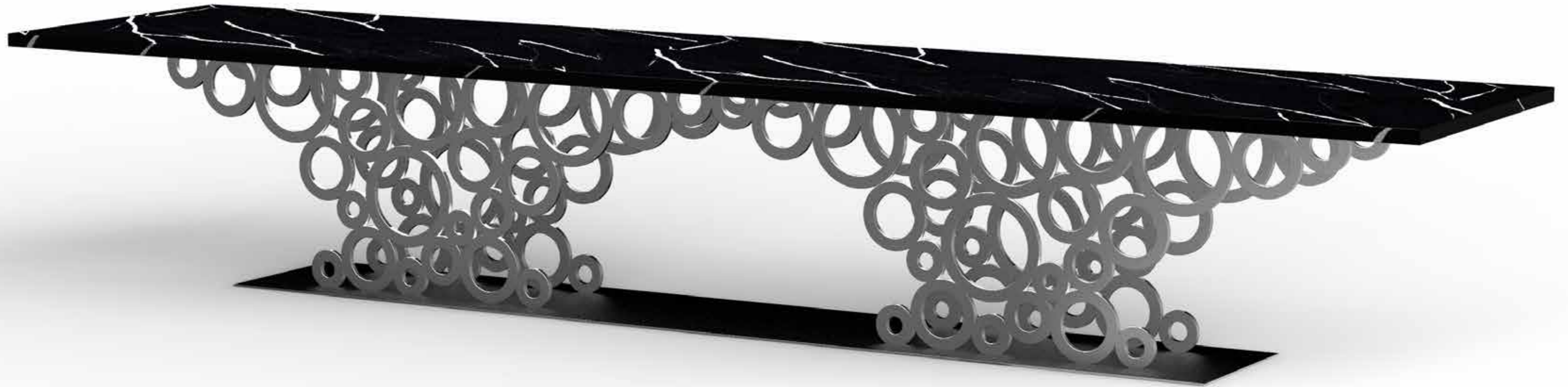


Ocean drive

DINING TABLE DT 260 / TOP ETERNITY

Ocean drive

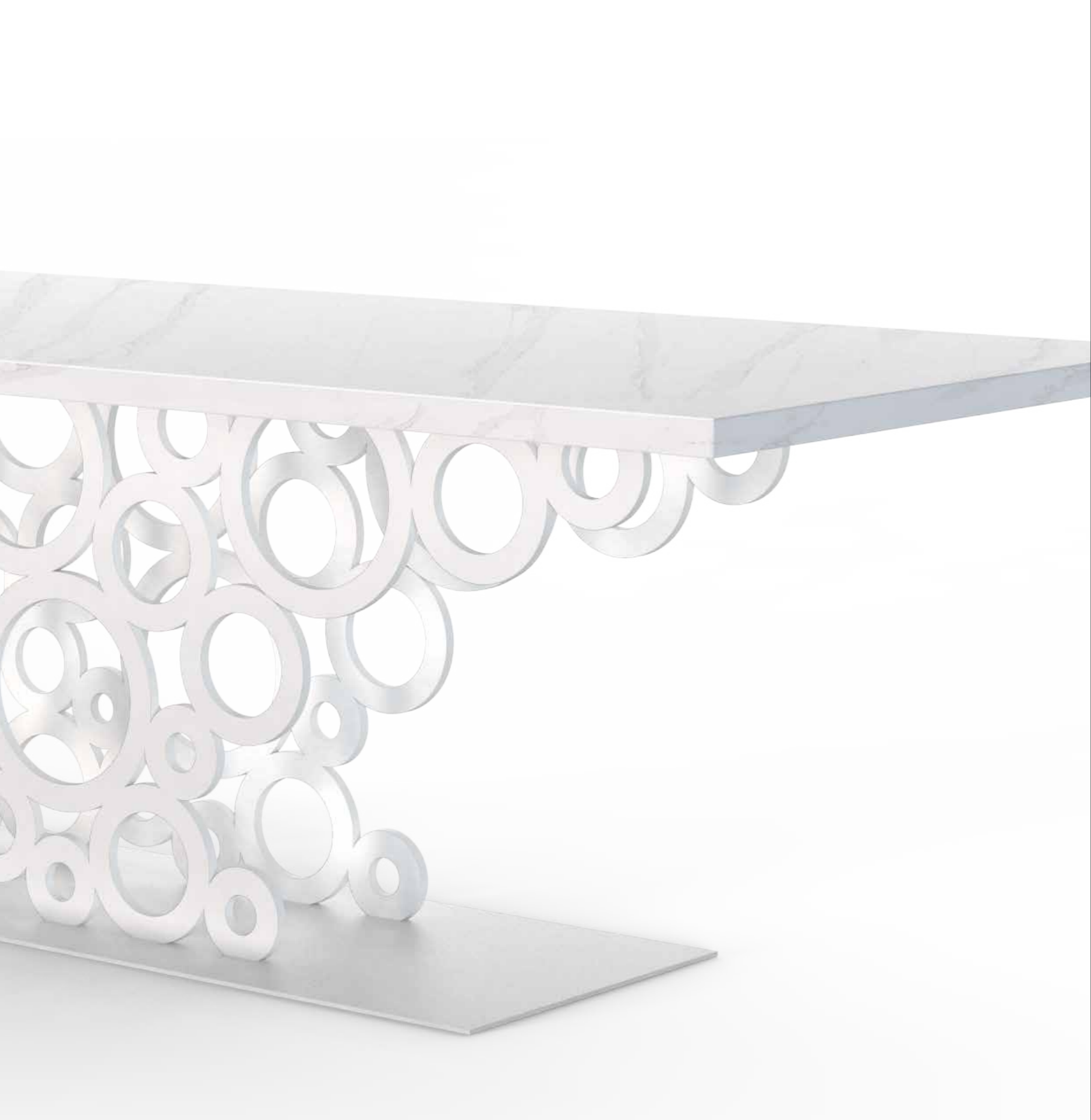
CUSTOMIZED & BESPOKE





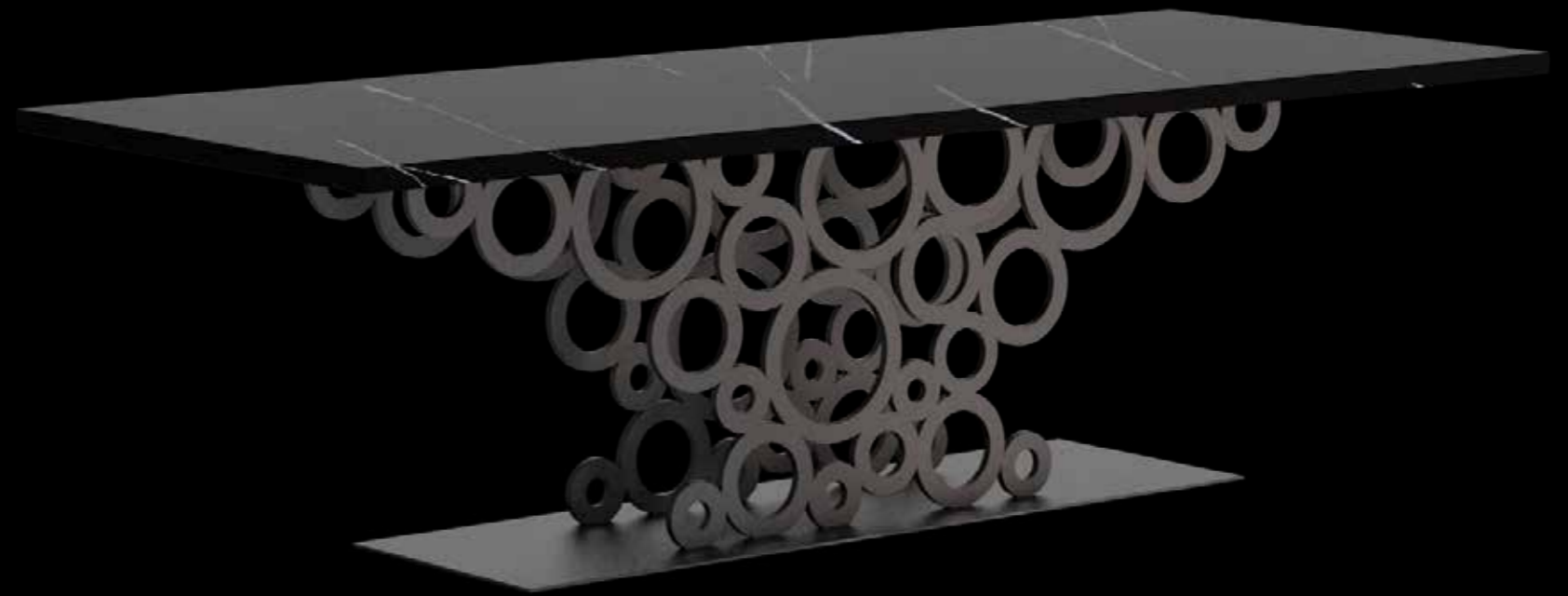
WALL CONSOLE WT 220 / TOP MIDNIGHT GOLD

Ocean drive



DINING TABLE DT 260 / TOP FROZEN GOLD

*Waves over waves of the ocean,
come ashore in a beautiful
spectacle of water and sound.
this is the inspiration
for the unique design
of this table*



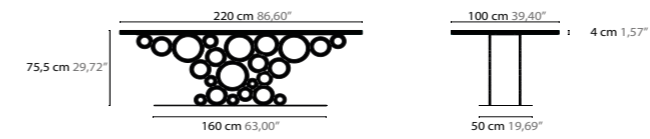
Ocean drive

DINING TABLE DT 260 / TOP MARQUINA

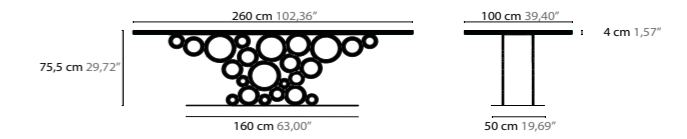


WALL CONSOLE WT 220 / TOP MIDNIGHT GOLD

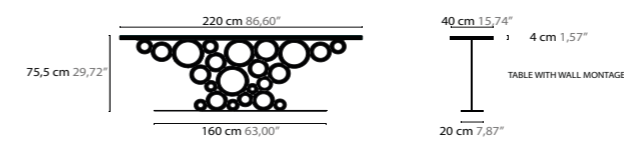
DINING TABLE DT 220 ART. 10000 + TOP CODE + FINISHING CODE



DINING TABLE DT 260 ART. 10004 + TOP CODE + FINISHING CODE



WALL CONSOLE WT 220 ART. 10008 + TOP CODE + FINISHING CODE



CUSTOMIZED AND BESPOKE POSSIBLE

TABLETOP SURFACES

NAME	NEW DAWN WHITE	ANTARTIC	CARUSO	LA NOCHE BLACK	EQUINOX	FROZEN GOLD	MIDNIGHT GOLD	MONTANA	ETERNITY	INDIAN SUMMER	ESSENCE	TACANDA
TOP CODE	110	115	120	125	130	210	215	220	225	230	235	240

BASE FINISHINGS

FINISHING CODE	302	303	304	305	306	307	308	309	310	311

MORE TABLETOP SURFACES AND FINISHINGS ON REQUEST



Carats for you

Carats for you

DESIGN BY COEN MUNSTERS



*A fascinating jewel
set with the most beautiful diamond
is translated into luxurious interior jewels.*

DINING TABLE DT 280 / TOP EQUINOX



Carats for you



DINING TABLE DT 280 / TOP ETERNITY

Carats for you



COFFEE TABLE CT 100 / TOP ETERNITY



Carats for you

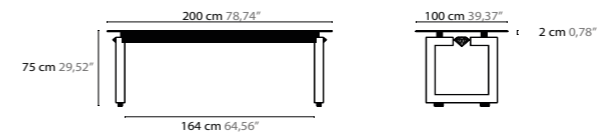
COFFEE TABLE CT 100 / TOP EQUINOX

Your sparkling carats



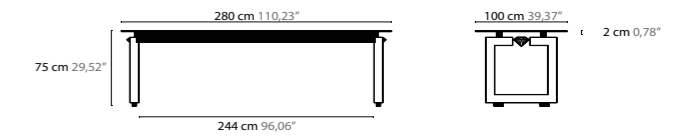
WALL CONSOLE WT 140 / TOP EQUINOX

DINING TABLE DT 200 ART. 10020 + TOP CODE + FINISHING CODE



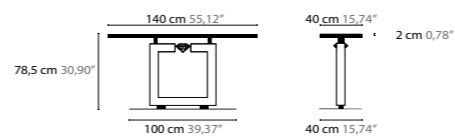
Crystal diameter ø15 centimeter

DINING TABLE DT 280 ART. 10024 + TOP CODE + FINISHING CODE



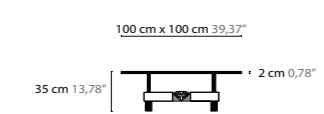
Crystal diameter ø15 centimeter

WALL CONSOLE WT 220 ART. 10034 + TOP CODE + FINISHING CODE



Crystal diameter ø15 centimeter

COFFEE TABLE CT 100 ART. 10030 + TOP CODE + FINISHING CODE



Crystal diameter ø15 centimeter

CUSTOMIZED AND BESPOKE POSSIBLE

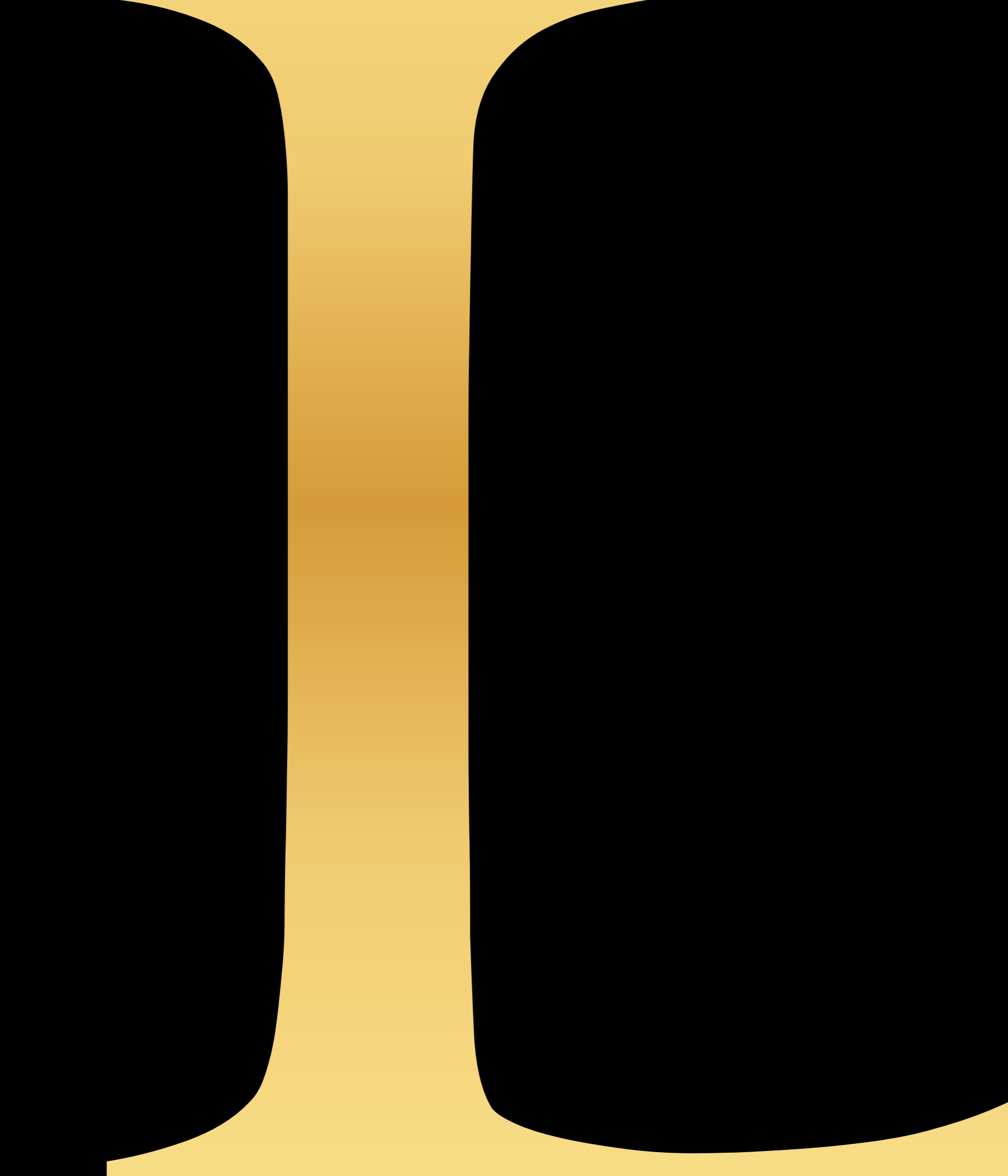
TABLETOP SURFACES

NAME	NEW DAWN WHITE	ANTARTIC	CARUSO	LA NOCHE BLACK	EQUINOX	FROZEN GOLD	MIDNIGHT GOLD	MONTANA	ETERNITY	INDIAN SUMMER	ESSENCE	TACANDA
TOP CODE	110	115	120	125	130	210	215	220	225	230	235	240

BASE FINISHINGS

FINISHING CODE	300	301	302	303	304	305	306	307	308	309	310	311

MORE TABLETOP SURFACES AND FINISHINGS ON REQUEST



LU

is a state

XU

of mind

RY

Cycles

DESIGN BY COEN MUNSTERS



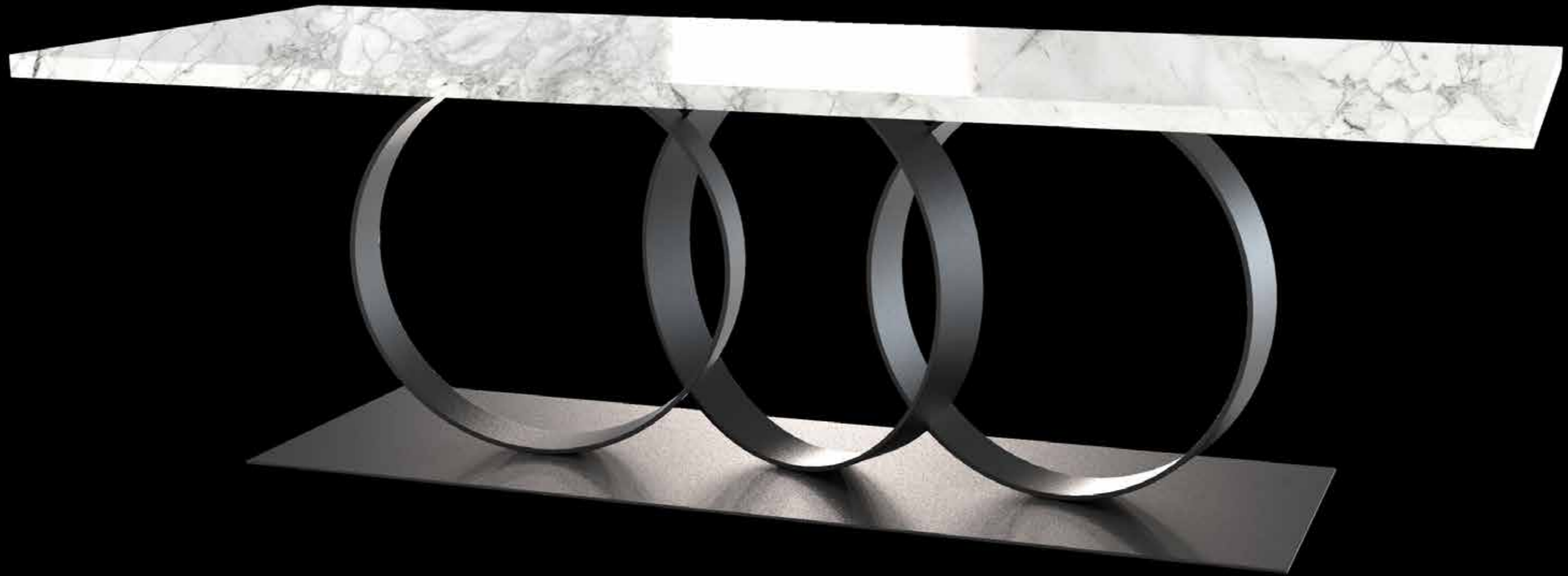
DINING TABLE DT1 260 / . TOP EQUINOX



DINING TABLE DT1 260 / TOP EQUINOX

Cycles

Cycles



Cycles

*Cycles, based on our life cycles
in which these eras always gently
spill over into new
experiences in our lives.*



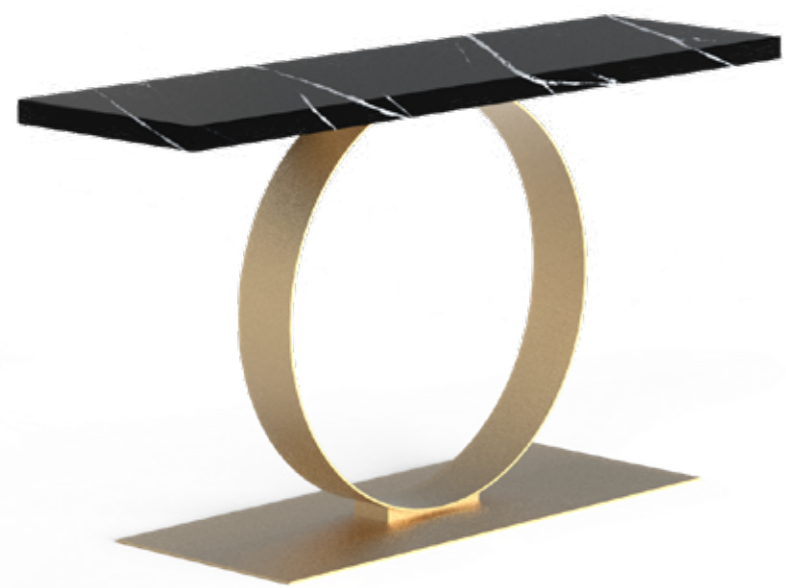
DINING TABLE DT1 260 / TOP EQUINOX



Cycles



DINING TABLE DT 220 / TOP ETERNITY



Cycles

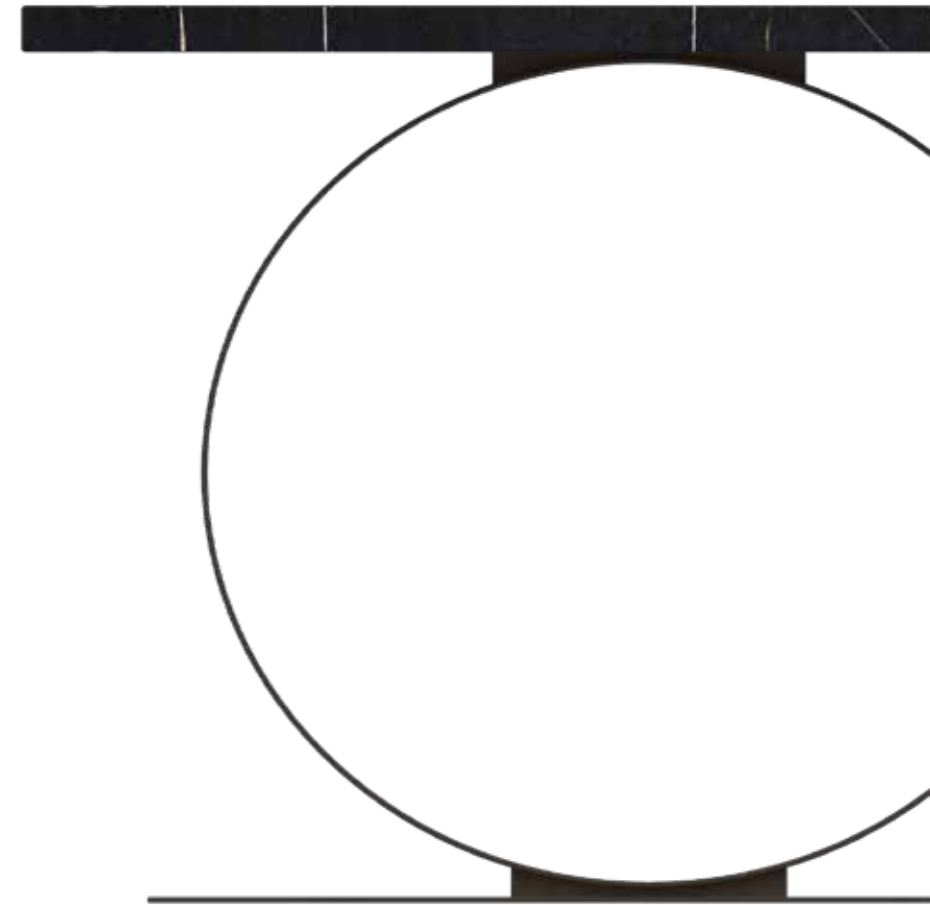


WALL CONSOLE WT 140 / TOP EQUINOX



DINING TABLE DT 220 / TOP MIDNIGHT GOLD

Cycles





DINING TABLE DT 300 / TOP ETERNITY



Cycles



COFFEE TABLE CT 150 / TOP EQUINOX

Cycles



COFFEE TABLE ST 150 / TOP EQUINOX

Cycles

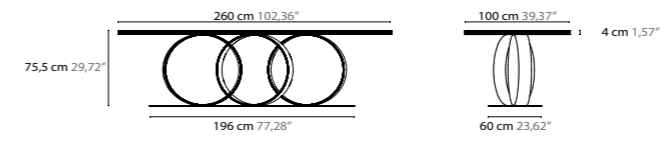


COFFEE TABLE CT 100 / TOP EQUINOX

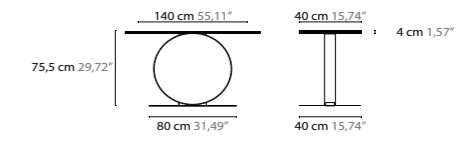


DINING TABLE DT1 260 / TOP EQUINOX

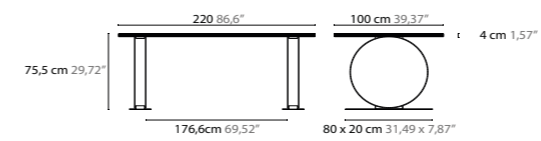
DINING TABLE DT1 260 ART. 10048 + TOP CODE + COLOR CODE



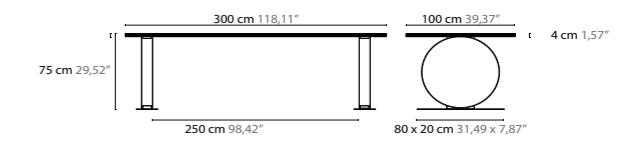
WALL CONSOLE WT 140 ART. 10056 + TOP CODE + COLOR CODE



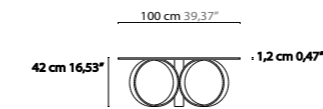
DINING TABLE DT 220 ART. 10040 + TOP CODE + COLOR CODE



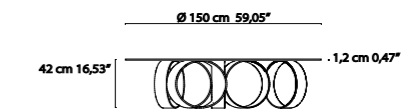
DINING TABLE DT 300 ART. 10046 + TOP CODE + COLOR CODE



COFFEE TABLE CT 100 ART. 10052 + TOP CODE + COLOR CODE



COFFEE TABLE CT 150 ART. 10054 + TOP CODE + COLOR CODE



CUSTOMIZED AND BESPOKE POSSIBLE

TABLETOP SURFACES

NAME	NEW DAWN WHITE	ANTARTIC	CARUSO	LA NOCHE BLACK	EQUINOX	FROZEN GOLD	MIDNIGHT GOLD	MONTANA	ETERNITY	INDIAN SUMMER	ESSENCE	TACANDA
TOP CODE	110	115	120	125	130	210	215	220	225	230	235	240

BASE FINISHINGS

FINISHING CODE	302	303	304	305	306	307	308	309	310	311

MORE TABLETOP SURFACES AND FINISHINGS ON REQUEST



For our next generations... we think green.

Swing around

DESIGN BY COEN MUNSTERS



COFFEE TABLE CT3 / TOP EQUINOX



COFFEE TABLE ST3 / TOP EQUINOX

Swing around



COFFEE TABLE CT3 / TOP NEW DAWN WHITE



SIMPLY BEAUTIFULL
Swing around

COFFEE TABLE CT3 / TOP ANTARTIC

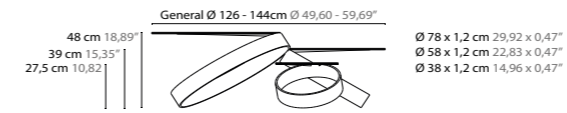




COFFEE TABLE CT 40 / TOP EQUINOX

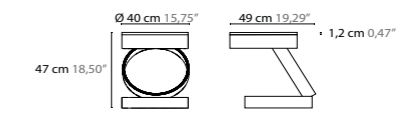
COFFEE TABLE CT3

ART. 10060 + TOP CODE + FINISHING CODE



COFFEE TABLE CT 40

ART. 10064 + TOP CODE + FINISHING CODE



CUSTOMIZED AND BESPOKE POSSIBLE

TABLETOP SURFACES

NAME	NEW DAWN WHITE	ANTARTIC	CARUSO	LA NOCHE BLACK	EQUINOX	FROZEN GOLD	MIDNIGHT GOLD	MONTANA	ETERNITY	INDIAN SUMMER	ESSENCE	TACANDA
TOP CODE	110	115	120	125	130	210	215	220	225	230	235	240

BASE FINISHINGS

FINISHING CODE	302	303	304	305	306	307	308	309	310	311

MORE TABLETOP SURFACES AND FINISHINGS ON REQUEST

DEFINITION

IS A WAY OF THINKING.



Moonwave

DESIGN BY COEN MUNSTERS



COFFEE TABLE CT 50 / TOP EQUINOX



Moonwave



COFFEE TABLE CT 100 / TOP MIDNIGHT GOLD



GLASS COLOR CLEAR GOLD

GLASS CODE 400



CLEAR OLD GREEN

401



CLEAR SILVER

402

GLASS BLOWN BY HAND

Moonwave



Moonwave



COFFEE TABLE CT 100 / TOP EQUINOX

Moonwave

The mouth-blown glasses of model Moonwave are an inspiration and representation of the soft moonlight, reflecting the nightly waves of the sea.



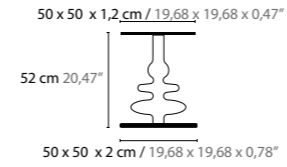
COFFEE TABLE CT 50 / TOP MIDNIGHT GOLD

Moonwave

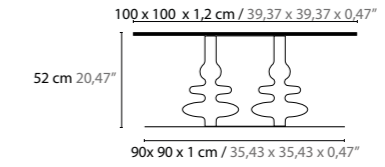


COFFEE TABLE CT 100 / TOP MIDNIGHT GOLD

COFFEE TABLE CT 50 ART. 10080 + TOP CODE + GLASS CODE



COFFEE TABLE CT 100 ART. 10090 + TOP CODE + GLASS CODE



CUSTOMIZED AND BESPOKE POSSIBLE



TABLETOP SURFACES

NAME	NEW DAWN WHITE	ANTARTIC	CARUSO	LA NOCHE BLACK	EQUINOX	FROZEN GOLD	MIDNIGHT GOLD	MONTANA	ETERNITY	INDIAN SUMMER	ESSENCE	TACANDA
TOP CODE	110	115	120	125	130	210	215	220	225	230	235	240

GLASS COLORS

GLASS CODE	400	401	402

MORE TABLETOP SURFACES ON REQUEST

Beside me

DESIGN BY COEN MUNSTERS



COFFEE TABLE CT 140 / TOP ANTARTIC



COFFEE TABLE CT 140 / TOP ETERNITY

Beside me



Beside me

COFFEE TABLE CT 140 / TOP ETERNITY

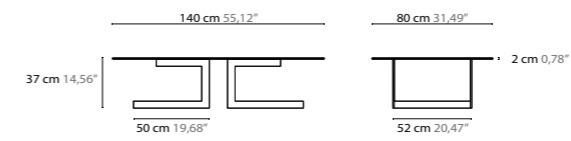


COFFEE TABLE CT 140 / TOP ETERNITY

COFFEE TABLE CT 140

ART. 10170 + TOP CODE + FINISHING CODE

CUSTOMIZED AND BESPOKE POSSIBLE



TABLETOP SURFACES

NAME	NEW DAWN WHITE	ANTARTIC	CARUSO	LA NOCHE BLACK	EQUINOX	FROZEN GOLD	MIDNIGHT GOLD	MONTANA	ETERNITY	INDIAN SUMMER	ESSENCE	TACANDA
TOP CODE	110	115	120	125	130	210	215	220	225	230	235	240

BASE FINISHINGS

FINISHING CODE	302	303	304	305	306	307	308	309	310	311

MORE TABLETOP SURFACES AND FINISHINGS ON REQUEST



Quattro del 4

DESIGN BY COEN MUNSTERS

COFFEE TABLE CT 100 / TOP EQUINOX



COFFEE TABLE CT 100C / TOP FROZEN GOLD

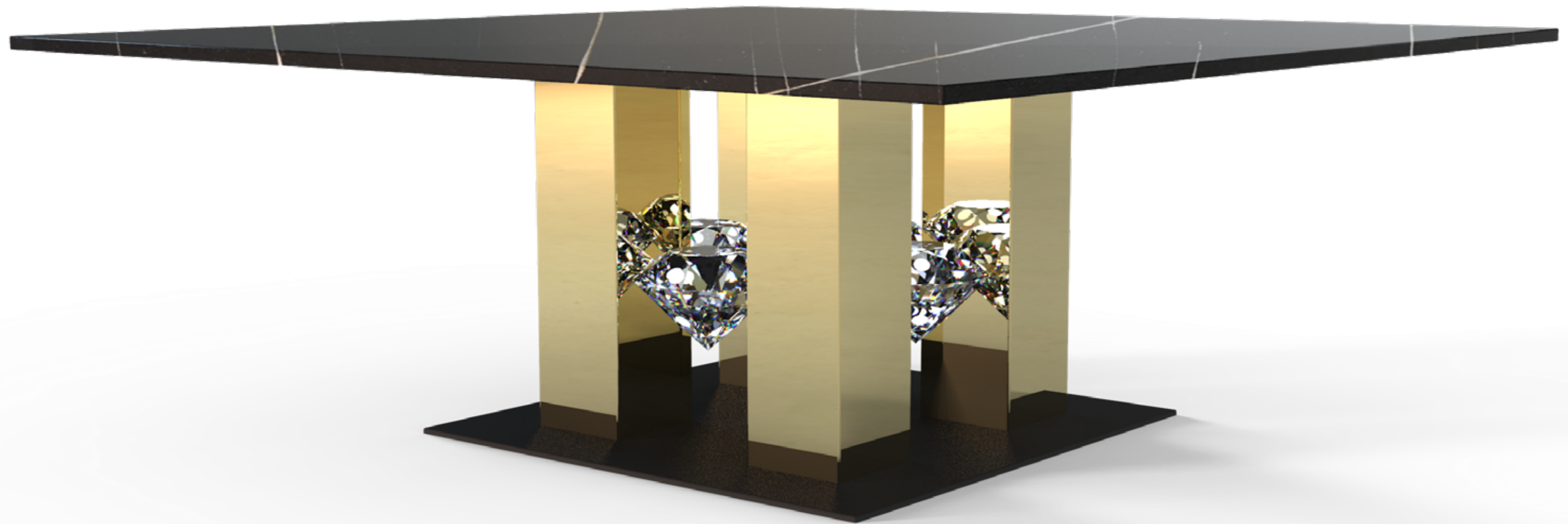
Quattro del 4

Quattro del 4



COFFEE TABLE CT 100C / TOP EQUINOX

Quattro del 4



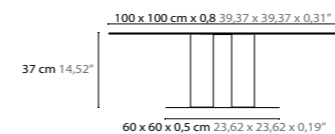
COFFEE TABLE CT 100C / MIDNIGHT GOLD



COFFEE TABLE CT 100C / TOP MIDNIGHT GOLD

COFFEE TABLE CT 100

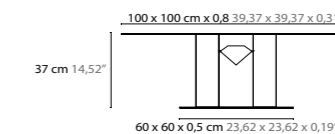
ART. 10150 + TOP CODE + FINISHING CODE



Crystal diameter ø15 centimeter

COFFEE TABLE CT 100C

ART. 10151 + TOP CODE + FINISHING CODE



Crystal diameter ø15 centimeter

CUSTOMIZED AND BESPOKE POSSIBLE

TABLETOP SURFACES

NAME	NEW DAWN WHITE	ANTARTIC	CARUSO	LA NOCHE BLACK	EQUINOX	FROZEN GOLD	MIDNIGHT GOLD	MONTANA	ETERNITY	INDIAN SUMMER	ESSENCE	TACANDA
TOP CODE	110	115	120	125	130	210	215	220	225	230	235	240

BASE FINISHINGS

FINISHING CODE	300	301	302	303	304	305	306	307	308	309	310	311

MORE TABLETOP SURFACES AND FINISHINGS ON REQUEST



Crystal lady

Crystal lady

DESIGN BY COEN MUNSTERS



DINING TABLE DT R 154 / TOP EQUINOX



DINING TABLE DTR 154 / TOP EQUINOX



DINING TABLE DT R 154 / TOP FROZEN GOLD

Crystal lady



DINING TABLE DTR 154 / TOP EQUINOX

Crystal lady

*The beauty of sparkling crystals
complete newly designed in furniture
gives every interior
a statement of fabulous luxury
with a highly personal touch*



DINING TABLE DT 210 / TOP ANTARTIC

Crystal lady



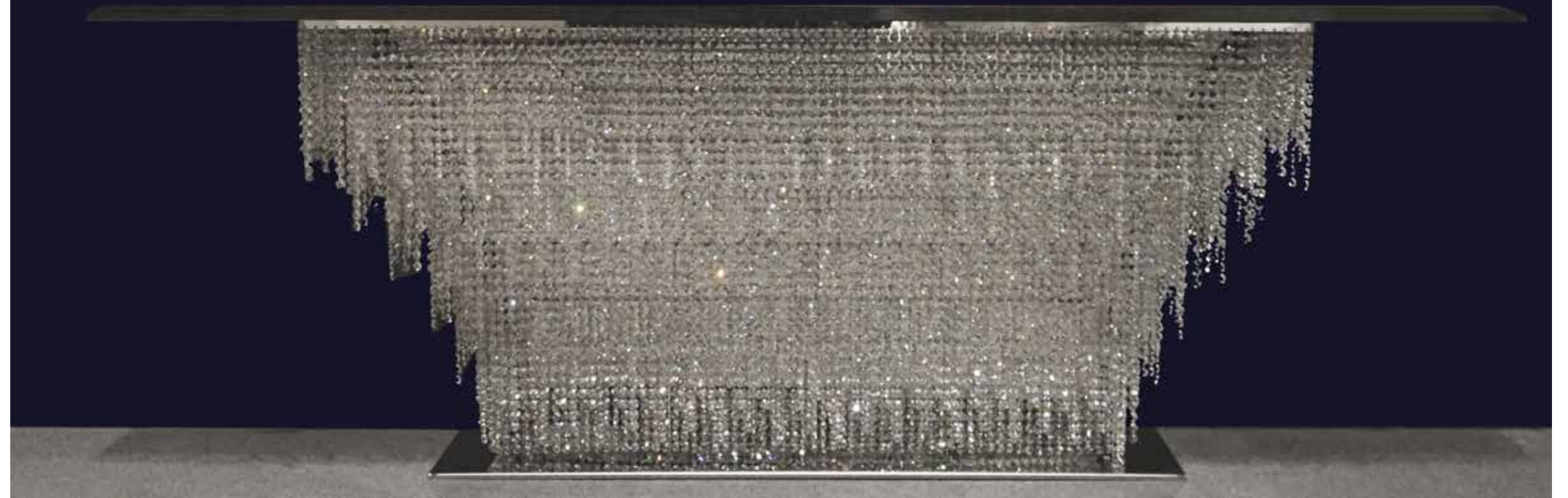
DINING TABLE DT 210 / TOP MONTANA

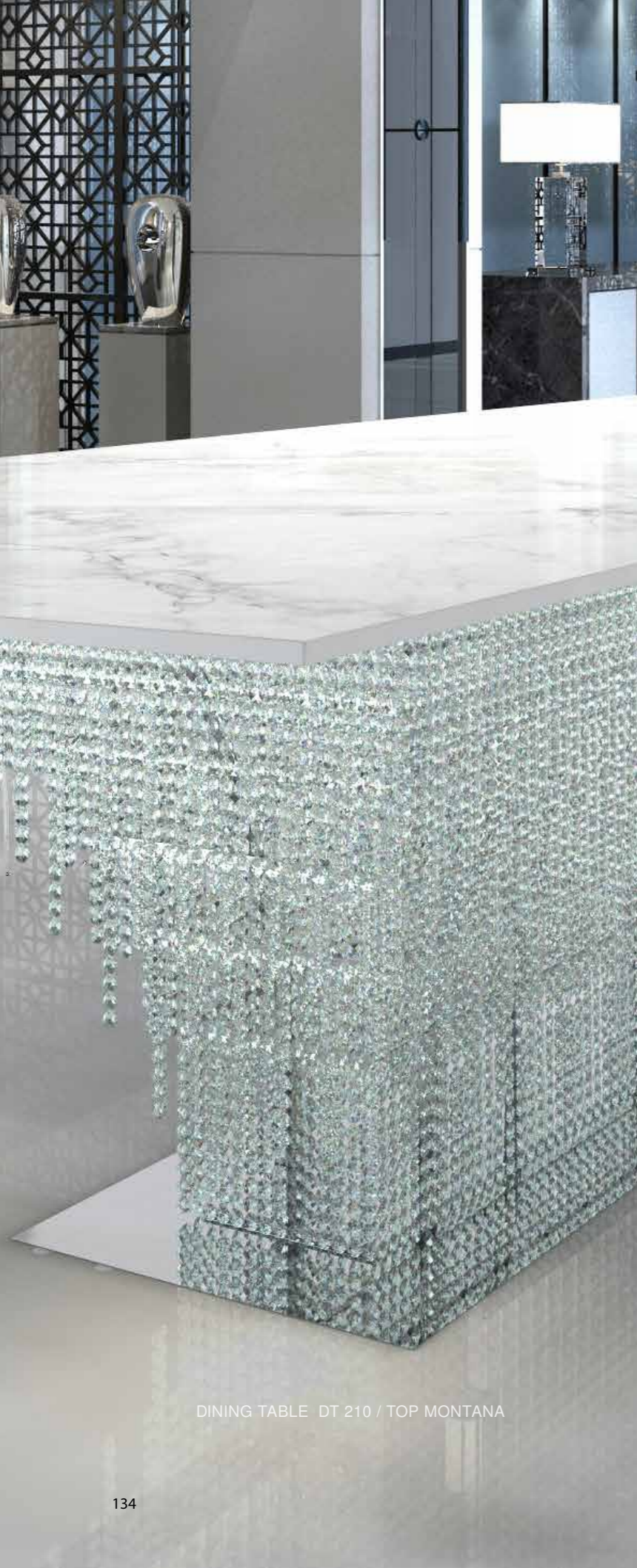
Crystal lady



Crystal lady

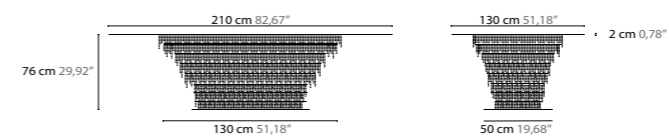
WALL CONSOLE WT 186 / TOP LA NOCHE BLACK



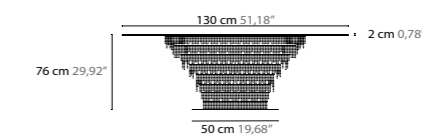


DINING TABLE DT 210 / TOP MONTANA

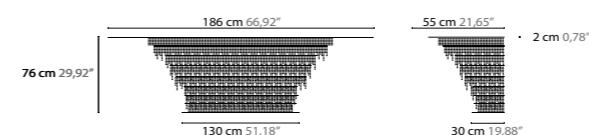
DINING TABLE DT 210 ART. 10104 + TOP CODE + COLOR CODE



DINING TABLE DTR Ø154 ART. 10100 + TOP CODE + COLOR CODE



WALL CONSOLE WT 186 ART. 10110 + TOP CODE + COLOR CODE



CUSTOMIZED AND BESPOKE POSSIBLE

TABLETOP SURFACES

NAME	NEW DAWN WHITE	ANTARTIC	CARUSO	LA NOCHE BLACK	EQUINOX	FROZEN GOLD	MIDNIGHT GOLD	MONTANA	ETERNITY	INDIAN SUMMER	ESSENCE	TACANDA
TOP CODE	110	115	120	125	130	210	215	220	225	230	235	240

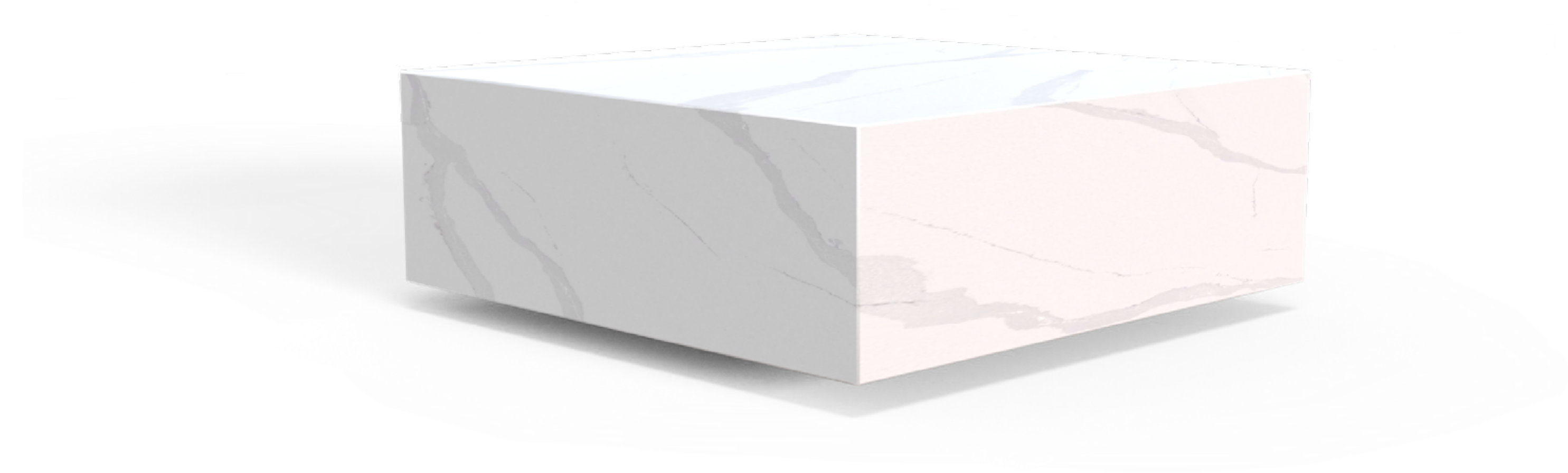
BASE FINISHINGS

FINISHING CODE	300

MORE TABLETOP SURFACES AND FINISHINGS ON REQUEST

Grand boulevard

DESIGN BY COEN MUNSTERS



COFFEE TABLE CT 90 / TOP ANTARTIC

Grand boulevard



COFFEE TABLE CT 90 / TOP INDIAN SUMMER





COFFEE TABLE CT 90 / TOP MONTANA

Grand boulevard



COLUMN CT 50 / TOP EQUINOX



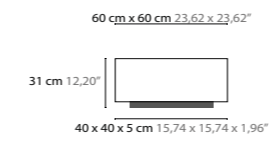
Grand boulevard



Grand boulevard

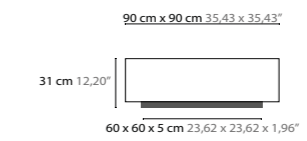
COFFEE TABLE CT 60

ART. 10120 + TOP CODE + COLOR CODE



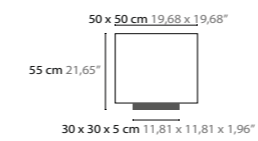
COFFEE TABLE CT 90

ART. 10124 + TOP CODE + COLOR CODE



COLUMN CT 50

ART. 10130 + TOP CODE + COLOR CODE



CUSTOMIZED AND BESPOKE POSSIBLE

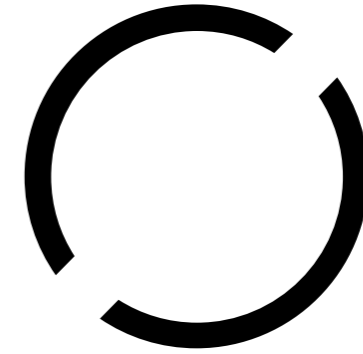
TABLETOP SURFACES

NAME	NEW DAWN WHITE	ANTARTIC	CARUSO	LA NOCHE BLACK	EQUINOX	FROZEN GOLD	MIDNIGHT GOLD	MONTANA	ETERNITY	INDIAN SUMMER	ESSENCE	TACANDA
TOP CODE	110	115	120	125	130	210	215	220	225	230	235	240

MORE TABLETOP SURFACES AND FINISHINGS ON REQUEST



COLUMN CT 50 / TOP ANTARTIC



R O O M D I V I D E R S

Frozen falls





Frozen falls

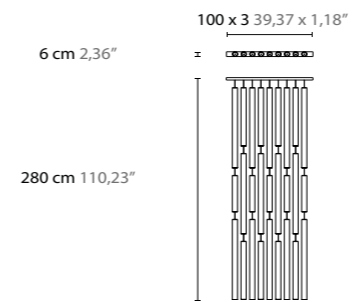




ROOM DIVIDER 17020

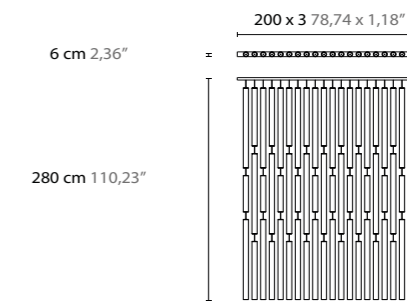
CEILING ORNAMENT C100

ART. 17010 + FINISHING CODE



CEILING ORNAMENT C100

ART. 17020 + FINISHING CODE

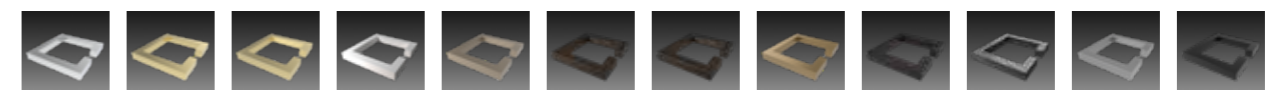


CUSTOMIZED AND BESPOKE POSSIBLE

GLASS TUBES OF Ø 60MM BOROSILICATE GLASS WITH LINES. SPACE BETWEEN GLASSES ADJUSTABLE. OTHER COMPOSITIONS POSSIBLE.

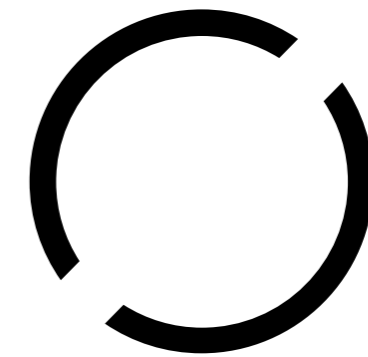


METAL ORNAMENT FINISHINGS



FINISHING CODE 300 301 302 303 304 305 306 307 308 309 310 311

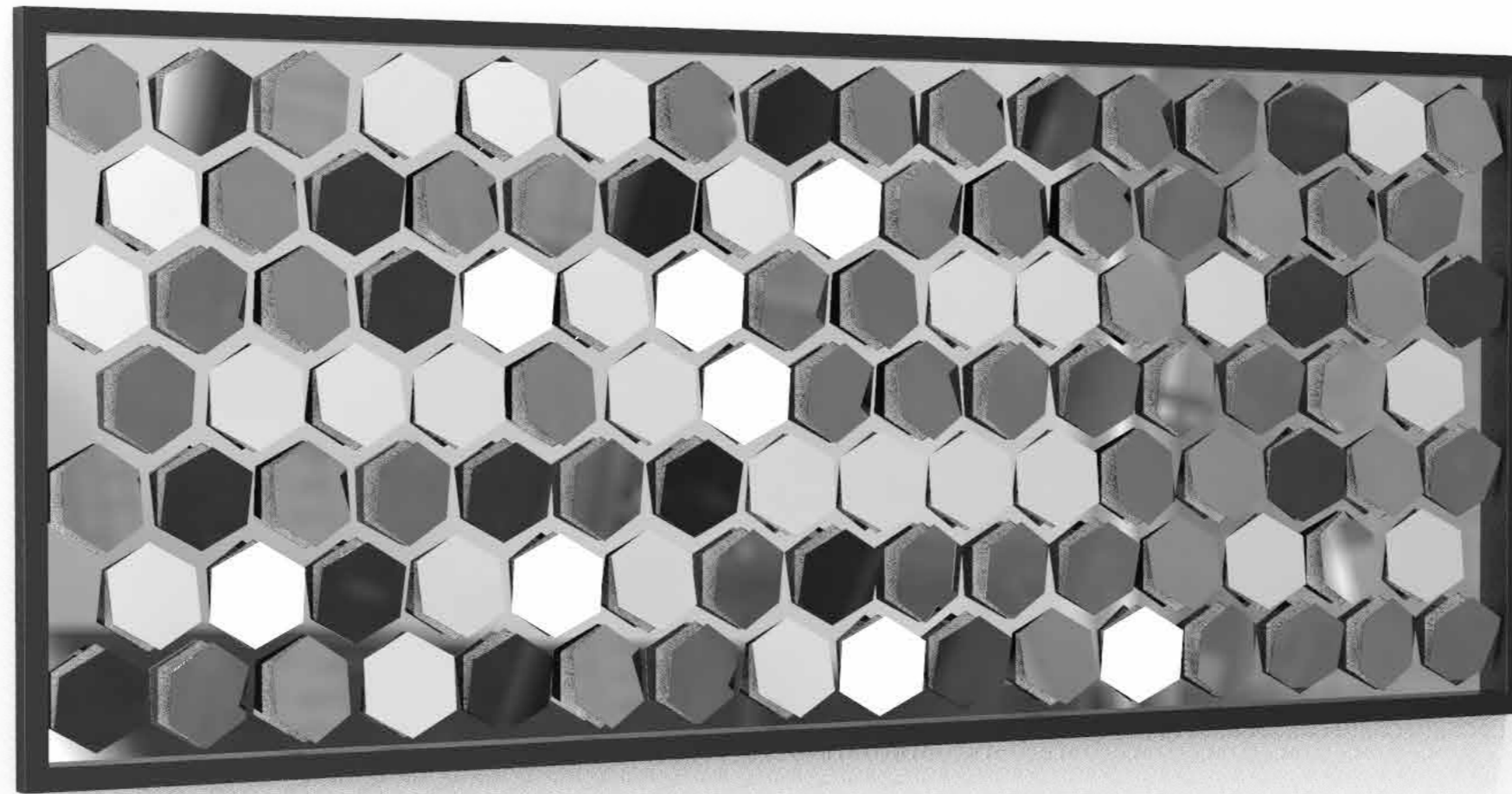
MORE TABLETOP SURFACES AND FINISHINGS ON REQUEST



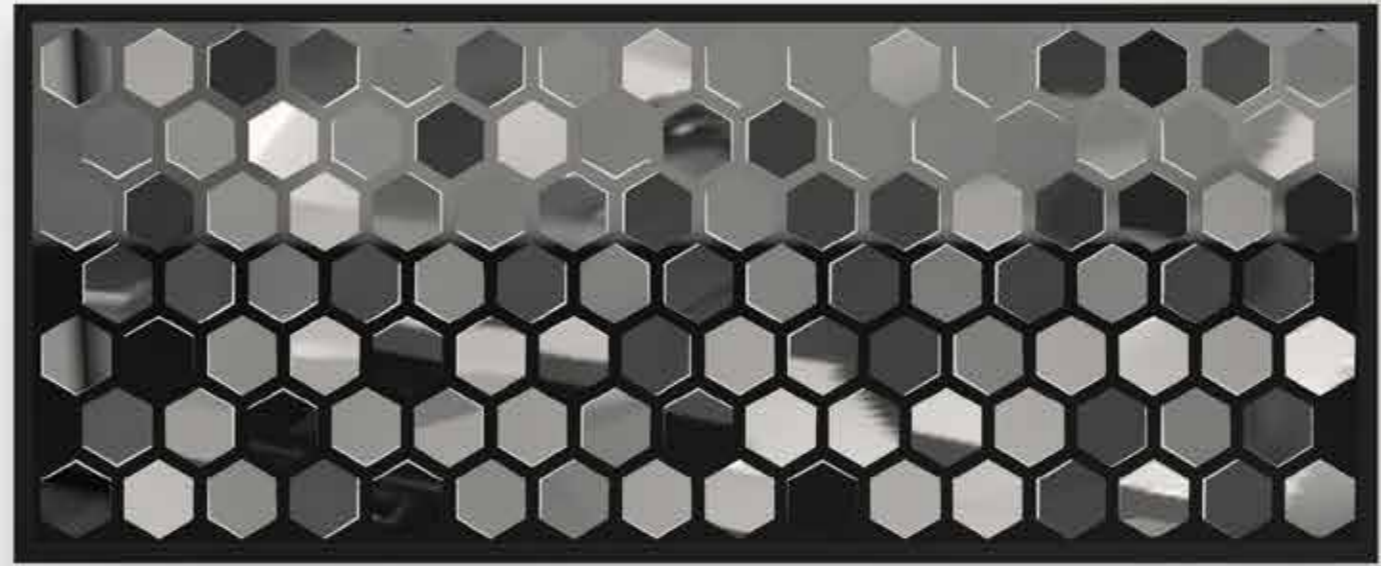
W A L L A R T

Delusion

DESIGN BY COEN MUNSTERS



WALL ORNAMENT W 300



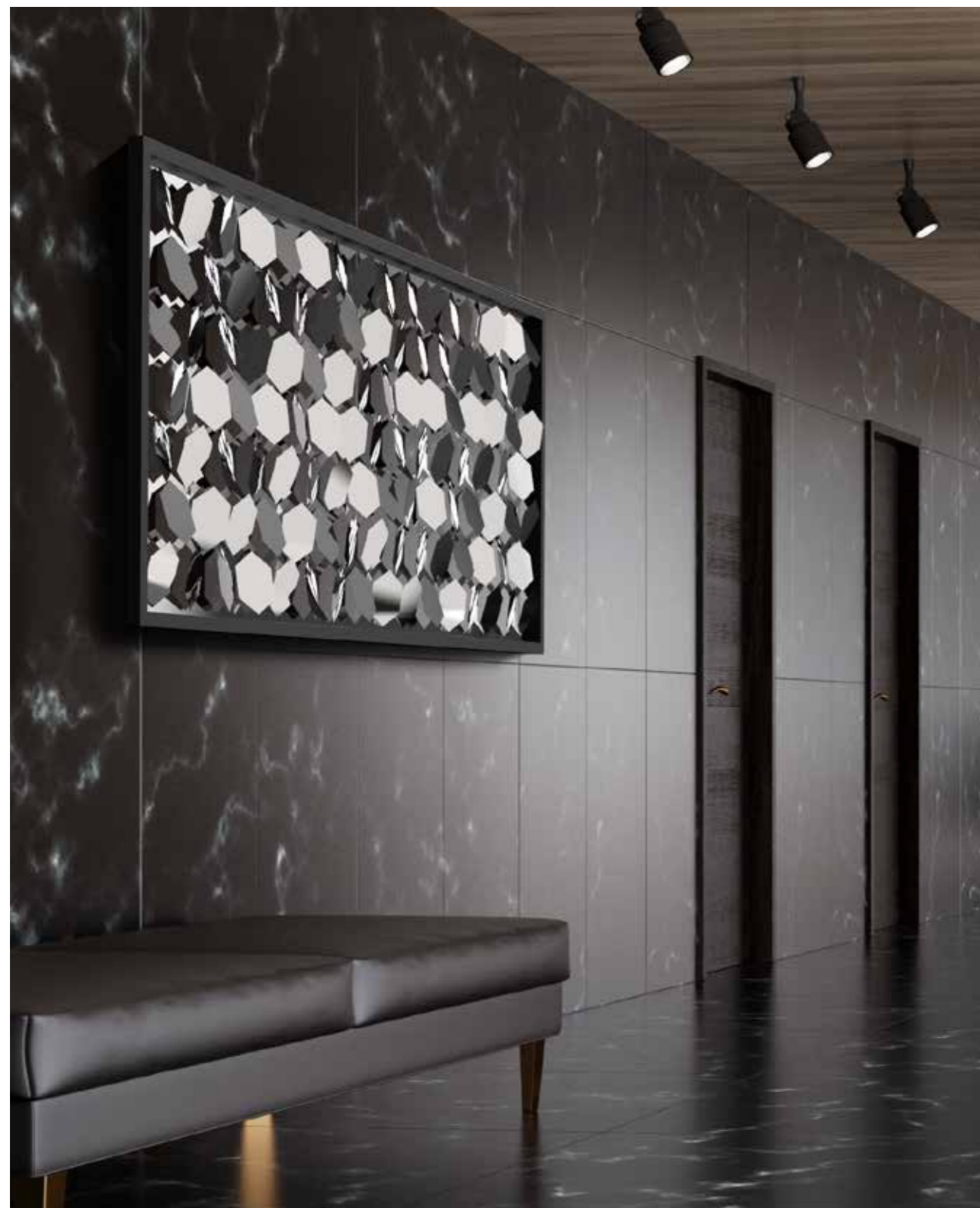
Delusion

WALL ORNAMENT W 300



WALL ORNAMENT W 300

Delusion

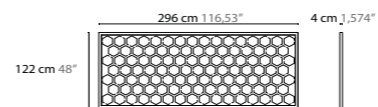


WALL ORNAMENT W 300

WALL ORNAMENT W 300

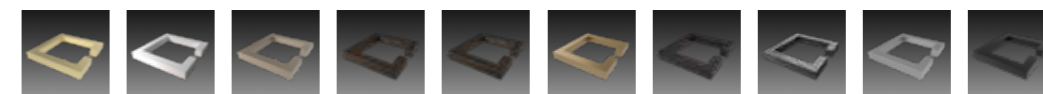
ART. 15010 + FINISHING CODE

CUSTOMIZED AND BESPOKE POSSIBLE



DECOR PLATE HIGH POLISHED STAINLESS STEEL

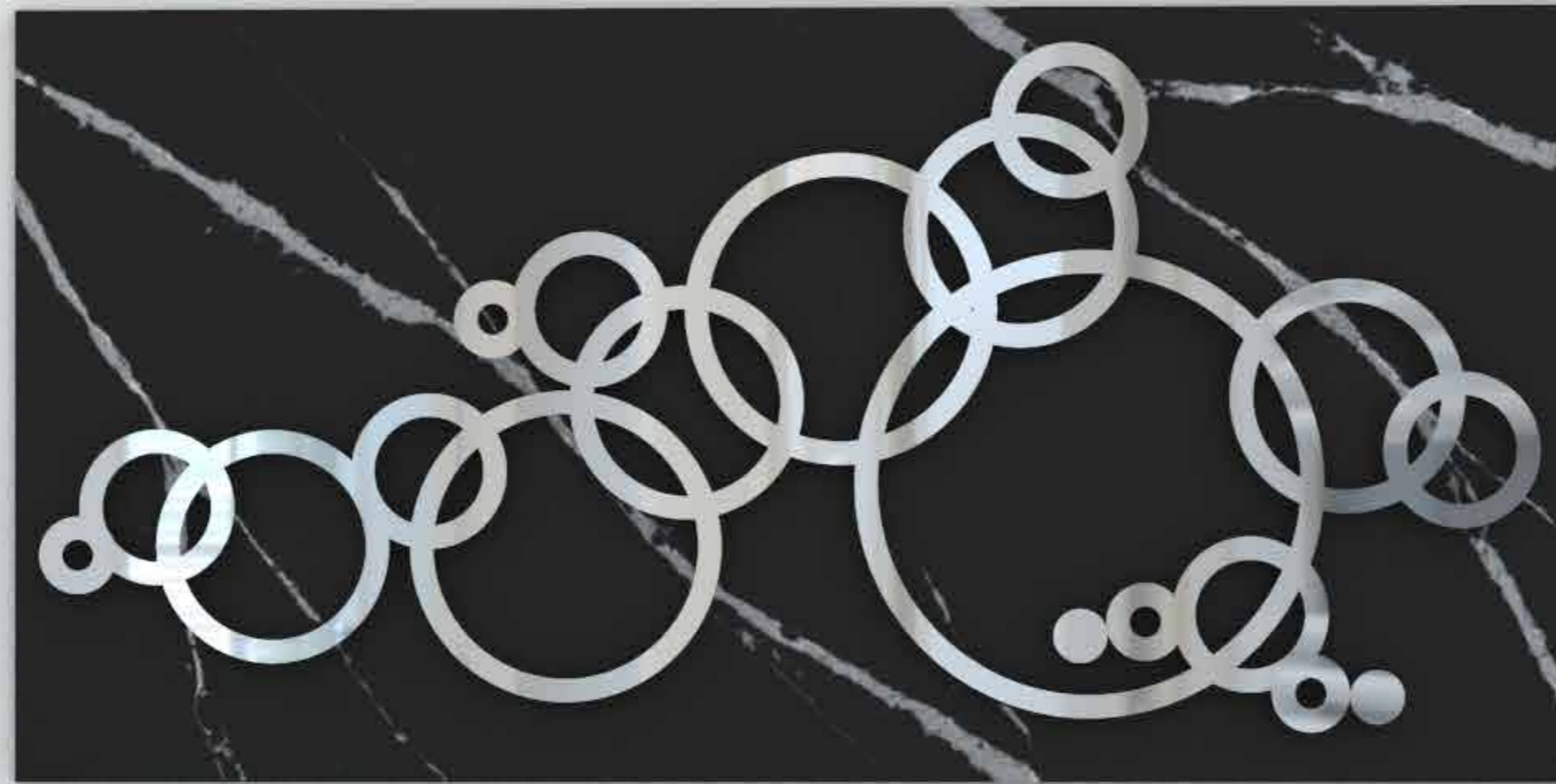
BASE FINISHINGS FOR FRAME



FINISHING CODE 302 303 304 305 306 307 308 309 310 311

MORE TABLETOP SURFACES AND FINISHINGS ON REQUEST

Roulette





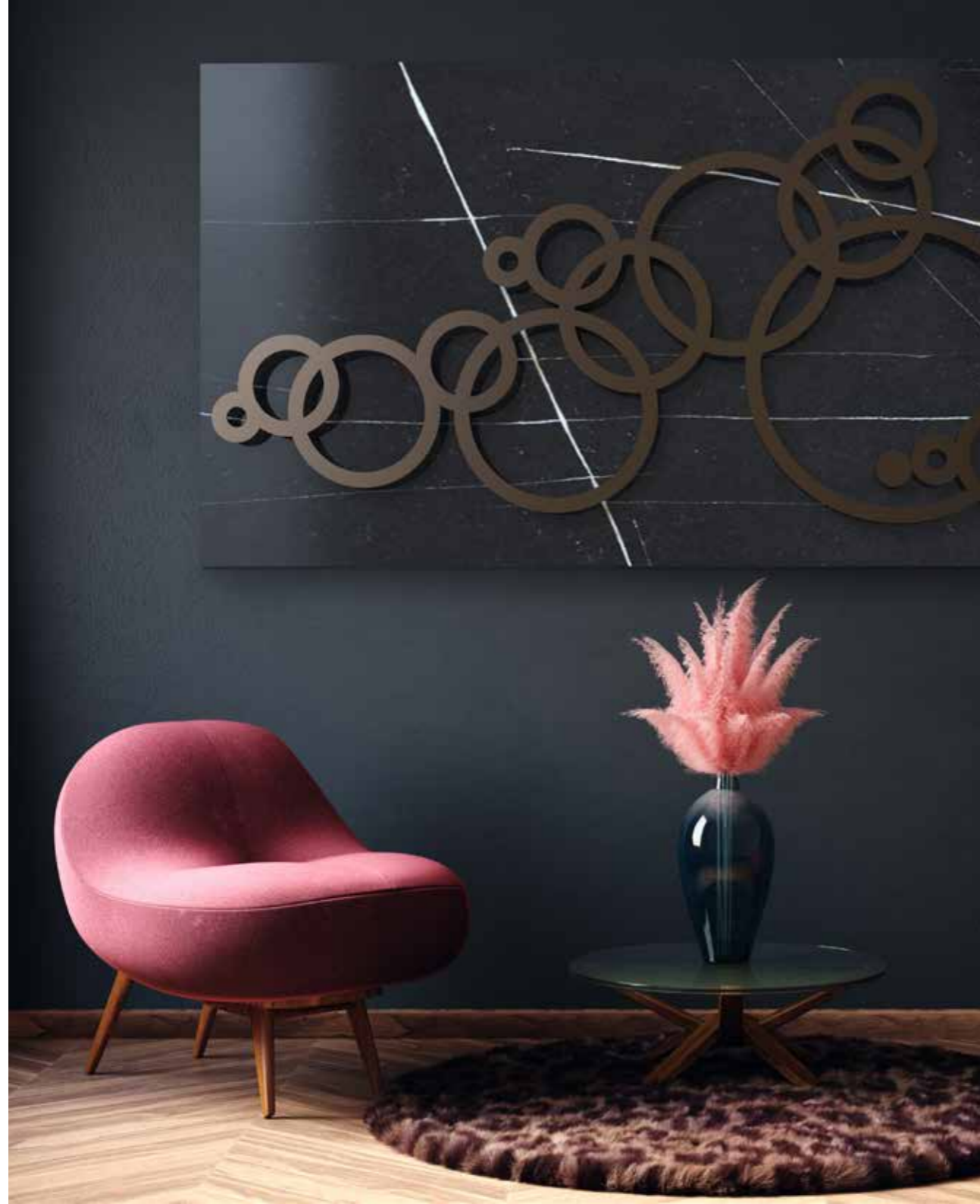
Roulette





Roulette



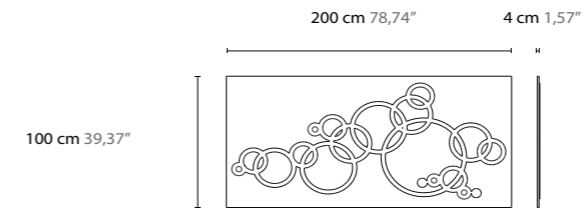


WALL ART

WALL ORNAMENT W200

ART. 15020 + TOP CODE + FINISHING CODE

CUSTOMIZED AND BESPOKE POSSIBLE



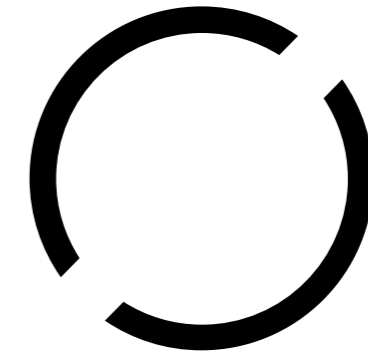
TABLETOP SURFACES

NAME	NEW DAWN WHITE	ANTARTIC	CARUSO	LA NOCHE BLACK	EQUINOX	FROZEN GOLD	MIDNIGHT GOLD	MONTANA	ETERNITY	INDIAN SUMMER	ESSENCE	TACANDA
TOP CODE	110	115	120	125	130	210	215	220	225	230	235	240

BASE FINISHINGS

FINISHING CODE	300	302	303	304	305	306	307	308	309	310	311

MORE TABLETOP SURFACES AND FINISHINGS ON REQUEST



C A N D L E H O L D E R S



Chilling

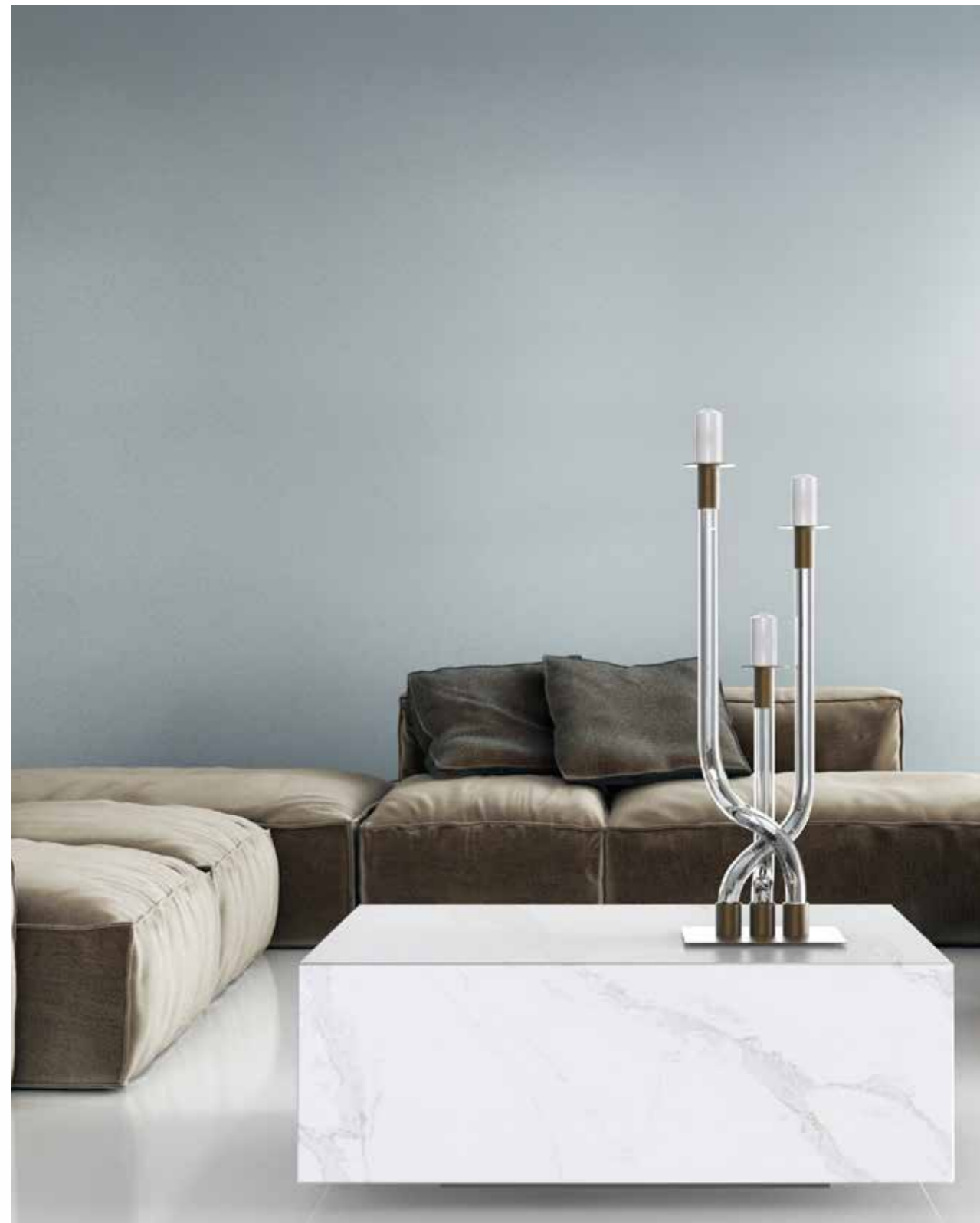


Chilling





Chilling





CANDLE HOLDER 16010

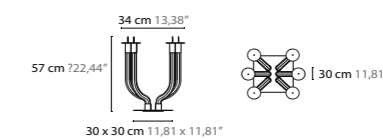
CANDLE HOLDER T6

ART. 16000 + FINISHING CODE



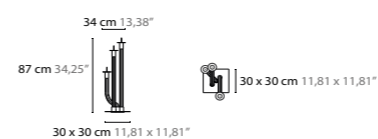
CANDLE HOLDER T6

ART. 16005 + FINISHING CODE



CANDLE HOLDER T6

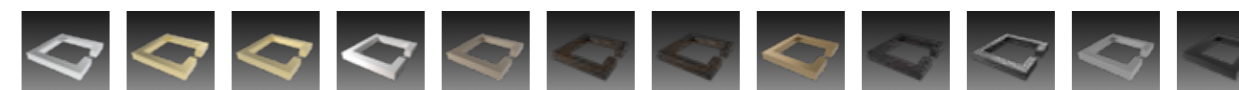
ART. 16010 + FINISHING CODE



CUSTOMIZED AND BESPOKE POSSIBLE

GLASS TUBES OF Ø 60MM BOROSILICATE GLASS WITH LINES

BASE FINISHINGS



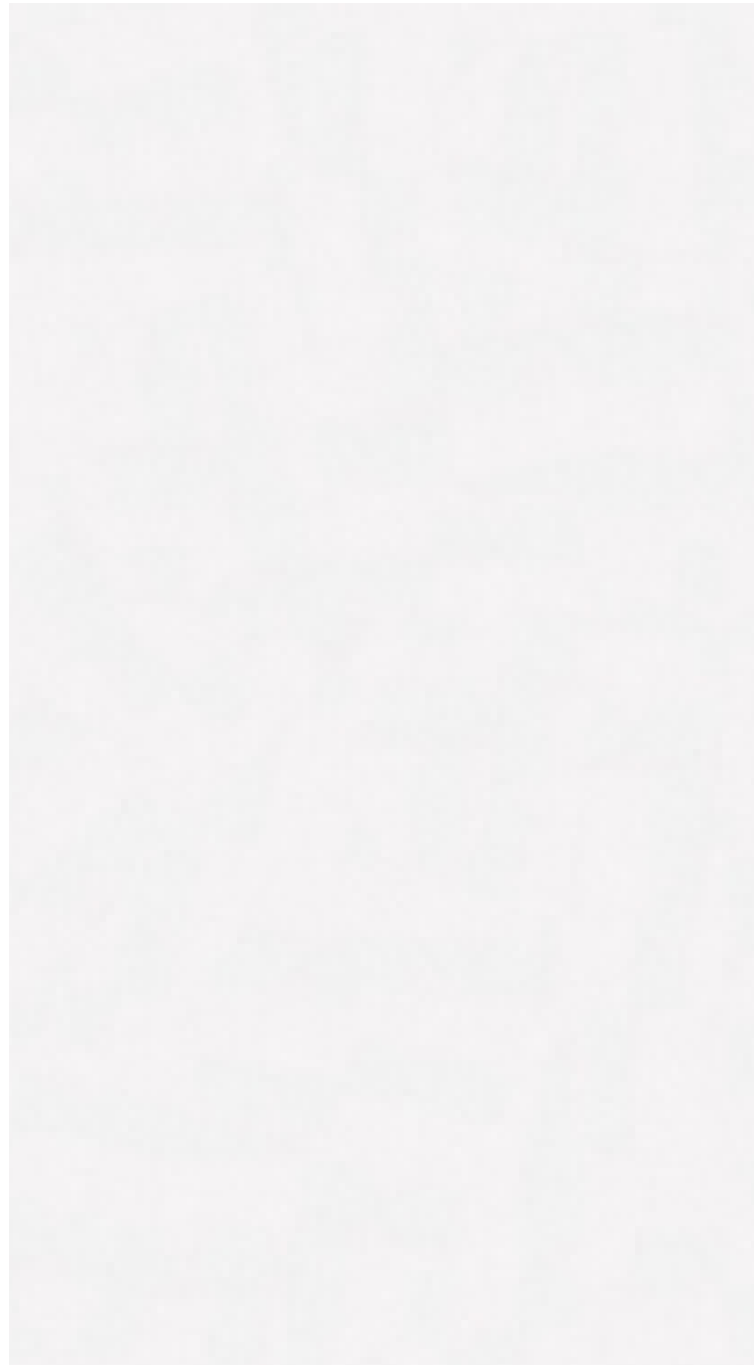
FINISHING CODE 300 301 302 303 304 305 306 307 308 309 310 311

MORE TABLETOP SURFACES AND FINISHINGS ON REQUEST

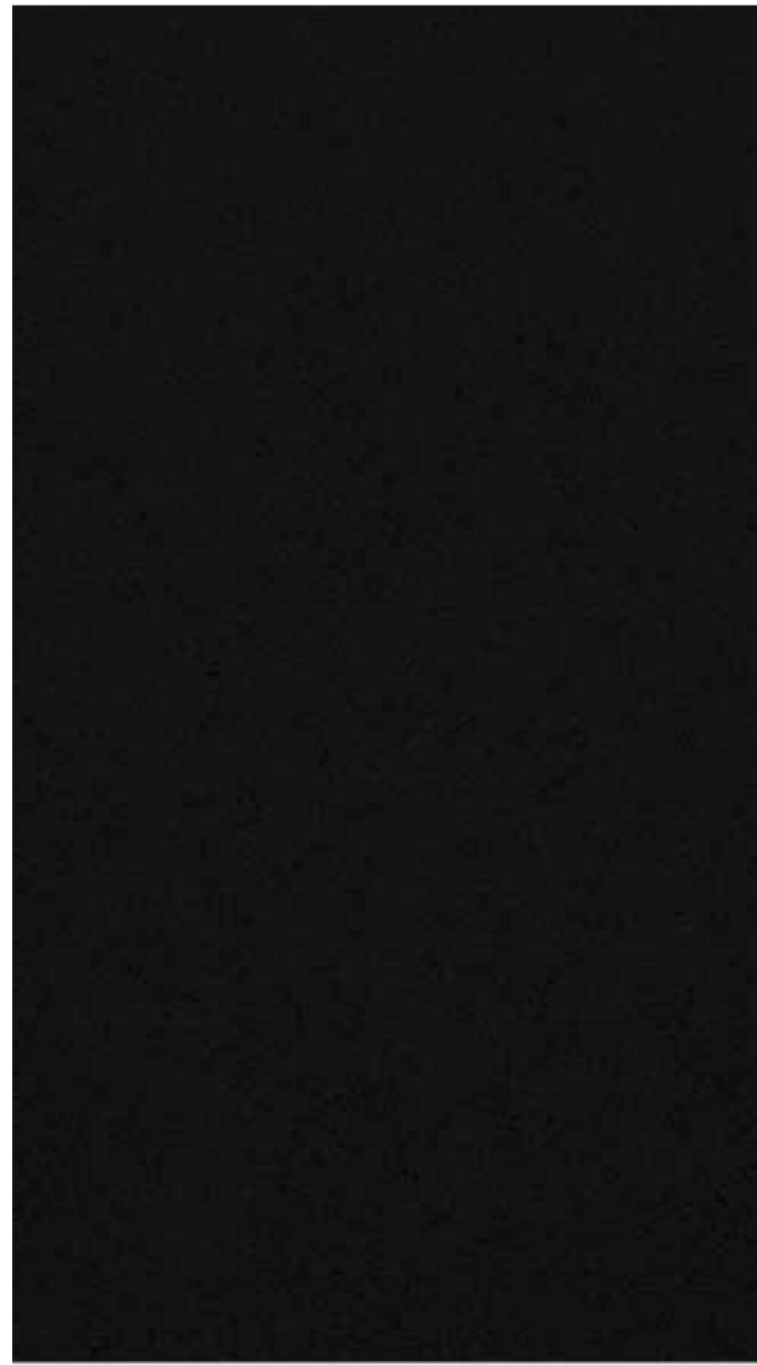


ENDLESS FINISHINGS

CYCASI ITEMS ARE CUSTOMISABLE IN ALL RAL COLORS



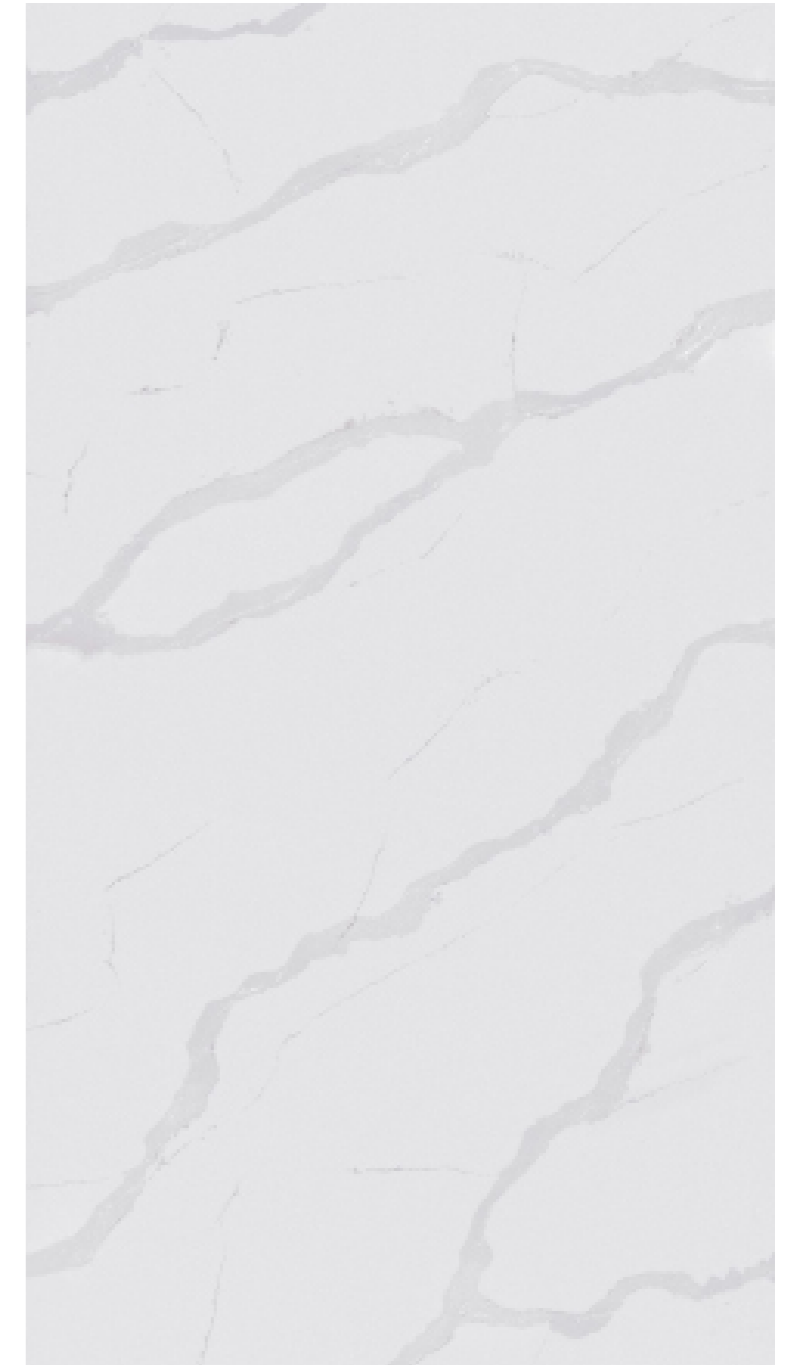
NEW DAWN WHITE
TABLETOP SURFACE CODE 110
POLISHED



LA NOCHE BLACK
TABLETOP SURFACE CODE 125
POLISHED



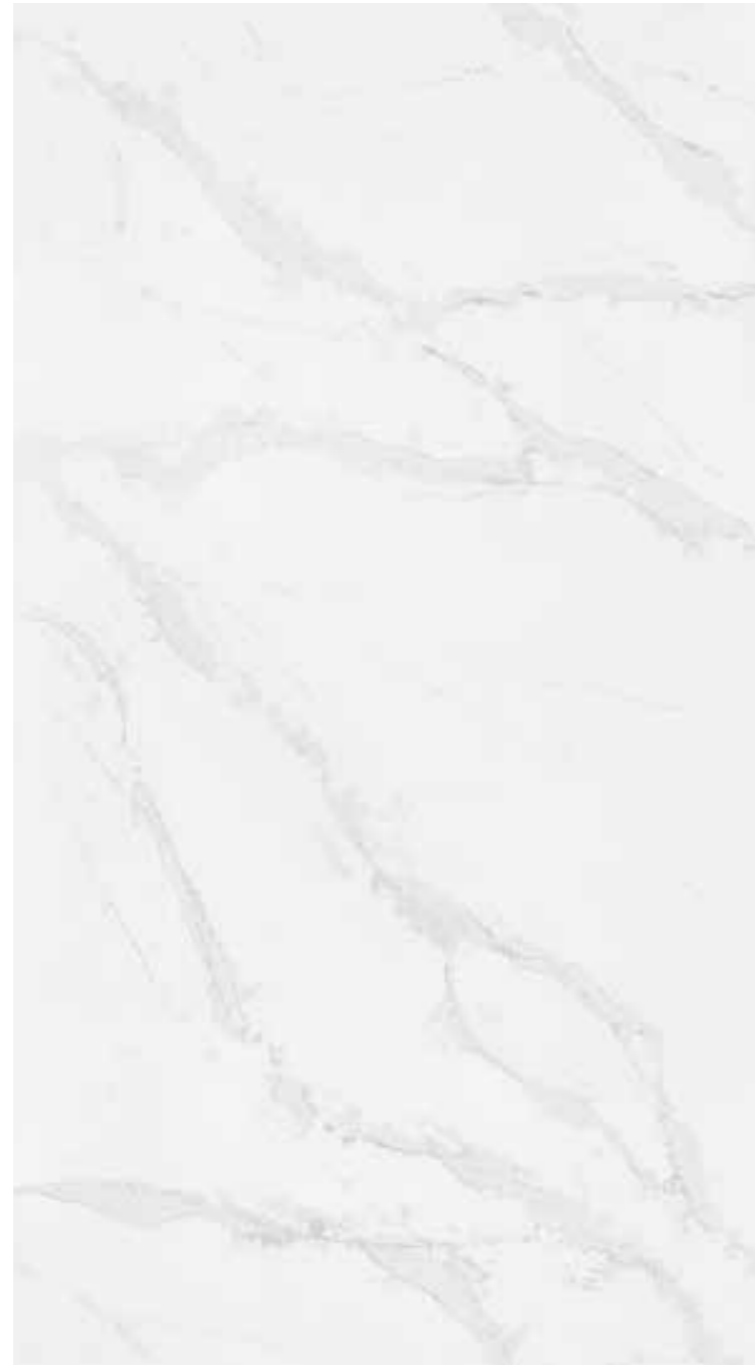
CARUSO
TABLETOP SURFACE CODE 120
POLISHED



ANTARTIC
TABLETOP SURFACE CODE 115
POLISHED



EQUINOX
TABLETOP SURFACE CODE 130
POLISHED



FROZEN GOLD
TABLETOP SURFACE CODE 210
HIGH GLOSS POLISHED



MIDNIGHT GOLD
TABLETOP SURFACE CODE 215
HIGH GLOSS POLISHED



MONTANA
TABLETOP SURFACE CODE 220
HIGH GLOSS POLISHED



ETERNITY
TABLETOP SURFACE CODE 225
HIGH GLOSS POLISHED



INDIAN SUMMER
TABLETOP SURFACE CODE 230
HIGH GLOSS POLISHED



ESSENCE
TABLETOP SURFACE CODE 235
HIGH GLOSS POLISHED



TACANDA
TABLETOP SURFACE CODE 240
HIGH GLOSS POLISHED

GENERAL INFORMATION

The contents of this Cycasi catalogue may be changed or cancelled at the discretion of Cycasi BV without prior notice.
Cycasi BV products/parts are tailor-made and can have differences between one and another.
Cycasi BV reserves the rights to make technical or aesthetic modifications without prior notice.

Special wishes on models can be worked out.
Customized products are possible on request with reserve of possibility of production.
All rights reserved for all products, layout, text, images and color and finishing impressions.

The finishing/color information is an impression, and the real finishing/color can be different.
Without written permission from Cycasi BV it is not allowed to use any picture, text or drawing,
or anything published in this catalogue, for commercial as well as private purposes.
Products, technical information and specifications are according to European standard.

All Cycasi products are registered designs.

The Cycasi trademark and logo is a registered brand.

Copyright © Cycasi BV, THE NETHERLANDS 2021



SUPPLY CONDITIONS

General sales, delivery and payment conditions Cycasi B.V.

Article 1	General
1.1	All offers, deliveries, service and sales are subject to these sale conditions
Article 2	Prices / Offers
2.1	All offers are without obligation
2.2	The prices quoted are based on delivery ex-factory inside and outside The Netherlands unless expressly stated otherwise on order confirmation / proforma or invoice.
2.3	If after the offer date one or more of the cost price factors undergo an increase, even if this is due to foreseeable circumstances, Cycasi B.V. is entitled to increase the agreed price accordingly.
Article 3	Orders
3.1	Orders come into effect only after explicit acceptance by Cycasi B.V. This explicit acceptance appears from the written confirmation of Cycasi B.V. or from the fact that Cycasi B.V. executes the order.
3.2	Verbal promises by and arrangements with subordinate employees of Cycasi B.V. shall not be binding upon Cycasi B.V. until and insofar as they have been confirmed by the latter in writing.
Article 4	Intellectual property, drawings, models, designs etc.
4.1	Information contained in catalogues, images, drawings etc. is not binding, except insofar as these are expressly included in an order confirmation signed by Cycasi B.V.
4.2	Cycasi B.V. reserves the copyright and property rights of designs, samples, models and all other items provided with the offer and may not be copied or transferred to any third party without Cycasi B.V. written permission.
4.3	If an offer requested to Cycasi B.V. is not followed by an agreement, the client to whom the offer is made is obliged to return the offer complete with all the mentioned in the previous paragraph within eight days to Cycasi B.V. Failing Cycasi B.V. reserves the right to fully pass on the costs incurred in the business, without prejudice to the right to recover from the client the costs, damage and interest arising from the infringement of said copyright and property right on the client.
Article 5	Delivery
5.1	All deliveries are made ex-factory inside and outside The Netherlands. Ex-factory means delivery of the ordered goods to the carrier or forwarder from the moment that the goods ready for delivery are placed there, they stand and travel at the risk of the client.
5.2	If Cycasi B.V. delivers franco, all shipments will be made by means of transport of the choice of Cycasi B.V. and the expense and risk of the client. The acceptance of terms by the carrier or forwarding agent without comment on the consignment note or other transport documents will then prove that the goods are in good condition at the latest.
5.3	Cycasi B.V. will start with an execution / production order when a partial payment is received. When full payment has been received or if expressly agreed in writing.
Article 6	Delivery-time / return shipments
6.1	unless explicitly agreed in writing, delivery-times are not considered as fatal. The delivery period starts on the day of the conclusion of the agreement.
6.2	If a delay arises because for the execution of the work, materials ordered on time are not delivered on time, production errors or irregularities, as a result of which a product cannot be delivered on time, the delivery time is extended to such an extent that, considering all circumstances, is reasonable.
6.3	Exceeding the delivery time, for whatever reason, does not entitle the client to non-compliance with any obligation entered with Cycasi B.V.
6.4	Return shipments must be made franco and are only permitted after written permission from Cycasi B.V. The risk of return shipments is for the client.
6.5	Expenses incurred by changing a current order are at the expense of the client.
6.6	The cancellation of already completely or partially paid assignments is not possible. Cycasi B.V. will never refund the amounts already paid. However, it is without obligation to Cycasi B.V. to come to this with a proposal to the client.
6.7	When cancelling pending orders, which have not yet been paid by written agreement before proceeding to production / delivery, Cycasi B.V. reserves the right to charge the costs to the client. Costs of so-called special products, other than the standard entry in the then current catalogue, are always 100% charged to the client.
Article 7	Guarantee and claims
7.1	Cycasi B.V. guarantees both the soundness and quality of the goods supplied by him.
7.2	The client must always give Cycasi B.V. the opportunity to carry out to repair possible defects. Defects caused by normal wear and tear, improper handling or injudicious or improper use or those that occur after modification by or on behalf of the customer or by third parties, are not covered by the guarantee.
7.3	No guarantee is given in respect of defects that are wholly or partly due to any government regulation regarding the nature of quality of the materials used.
7.4	Any claims regarding externally perceptible defects of execution of the order must take place within eight days after receipt of the goods by the client. In the event of exceeding of which term any claim against Cycasi B.V. in respect of those defects' lapses.
7.5	Any defects because of manufacturing and assembly faults on the goods, Cycasi B.V. will repair or replace it free of charge for its choice.
7.6	Submitting a claim does not entitle you to postpone payment.
7.7	Guarantee only applies if the client has fulfilled its obligations against Cycasi B.V. (both financial as otherwise)

Article 8	Retention of title
8.1	The goods remain the exclusive property of Cycasi B.V. until full payment of the invoice occurred.
8.2	In case the client fails to fulfil the payment obligation towards Cycasi B.V. Cycasi B.V. is entitled to take back the delivered goods without notice of default. The client authorizes Cycasi B.V. to enter the place where the goods are located.
Article 9	Liability
9.1	Cycasi B.V. is not liable for operational loss of other indirect damages with respect to the delivered goods.
9.2	Any claim exceeding the amount of invoice shall be excluded.
9.3	Cycasi B.V. is not liable for damages beyond their control, such as war, danger of war, civil war, rebellion, revolution, insurrection, strikes, transportation difficulties, fire and other serious interruptions in the business activities of Cycasi B.V. or Cycasi B.V. suppliers and, more generally, not every cause that can be attributed to Cycasi B.V.
Article 10	Terms of payment
10.1	Full payment has been made for delivery of goods, unless explicitly agreed otherwise in writing in a specific period.
10.2	If the client does not pay within the agreed term, Cycasi B.V. is entitled to charge the client after the expiry of the period for loss of interest of 4% per month or part of a month.
10.3	The entire purchase price is immediately due and payable in the event of not-prompt payment of the agreed term on the due date, when the client is in a state of bankruptcy, requests suspension of payments or has been requested under guardianship, if nay attachment to the goods or claims of the client is made. And when it dies, goes into liquidation or is dissolved.
10.4	In addition to Cycasi B.V. principal claim and interest from the client, Cycasi B.V. is entitled to claim all extra-judicial costs, which are caused by the non (timely) payment. Extra-judicial costs are payable by the client in any case of Cycasi B.V. has insured himself for the collection of the assistance of a third party. Cycasi B.V. reserves the right to start these procedures without prior notification to the client. These costs will be calculated in accordance with the collection rare advised by The Netherlands bar association of court bailiff. From the mere fact that Cycasi B.V. is assured of the help of a third party, the size and the obligation to pay extra-judicial costs is apparent.
Article 11	Internet and Promotion
11.1	It is not permitted to promote and / or offer Cycasi B.V. name, Logo and products and designs, with us without price information, on website or through any other publication without the express written permission of Cycasi B.V.
11.2	Cycasi B.V. will act decisively against violation of the above.
Article 12	Disputes and applicable law
12.1	Dutch law exclusively applies to all agreements concluded by Cycasi B.V.
12.2	All disputes that arise or arise in connection with the agreements concluded with Cycasi B.V. are only for the attention of the judge in 's-Hertogenbosch. Who is competent in the first instance, or any other competent court, if Cycasi B.V. so chooses.
Article 13	Privacy
13.1	The counterpart hereby gives the user permission for the processing of all data of the counterpart which are necessary for the execution of the agreement between the counterpart and the use, as well as for the processing of all data provided by the counterpart during the term of the agreement and / or prior to the conclusion of the agreement has been made available to the user. The other party and user acknowledge that the processing of these data is necessary to comply with the execution of the agreement or the legal obligation (s) of the user, to pact the vital interests of the other party, or for the pection of legitimate interests of the user. User. Het user will not use this information for any other purpose than is necessary for the execution of the agreement and marketing activities or to comply with any legal obligation.
13.2	In addition, the other party now gives permission for the user to keep the data if there is any (legal or fiscal) retention period for the user. The data will in any case be kept for a period of five (5) years after the end of the agreement.
13.3	The other party hereby declares that it is aware of his / her rights in this matter, including but not limited to the right of inspection, the right to withdraw the consent and the right to lodge a complaint with the supervisor.

These General sales, delivery and payment conditions of Cycasi B.V. as registered at the chamber of commerce in Eindhoven with number 78116546

CYCASI B.V.

KORENMIJT 3

NL - 5741 PP

BEEK EN DONK - THE NETHERLANDS

T 0031 - (0) 492 21 89 61

E info@cycasi.com

W cycasi.com

TO DISCOVER THE CYCASI COLLECTION

PLEASE BE WELCOME TO OUR SHOWROOM IN BEEK EN DONK



ALL RIGHTS RESERVED CYCASI * COPYRIGHT © BY CYCASI B.V.
ALL CYCASI PRODUCTS ARE REGISTERED.
CYCASI IS A REGISTERED BRANDNAME.



CYCASI